



Griff
werk

FEEL THE DIFFERENCE: SOFT2TOUCH



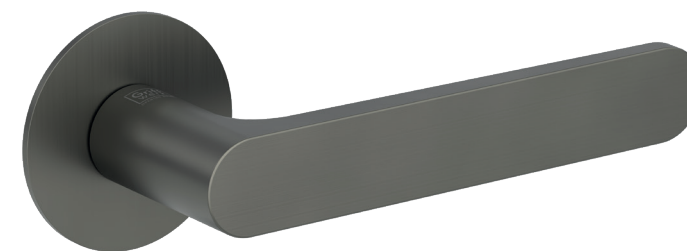
GLASS DOOR MECHANISMS AND DOOR HANDLES
WITH THE SOFT2TOUCH FINISH



HOMELINESS REDEFINED

SAY HEJ TO HYGGE – WITH WARM COLOURS AND NATURAL MATERIALS

Cosy, natural and tasteful minimalism is the latest interior trend. Your home should be somewhere you feel safe and secure, away from the uncertainty of the outside world. And it needs a homely style to create this calming environment. Warm tones and materials are becoming more and more popular, in a move away from the stark white surfaces of recent years. Our handles with their velvety soft2touch finish are perfect for this style of living and are available in three colours to complement the latest interior trends.



soft2touch
An elegant form and luxuriously soft to the touch – a finish that looks and feels beautiful, shown here in the AVUS PIATTA S in Cashmere Grey.



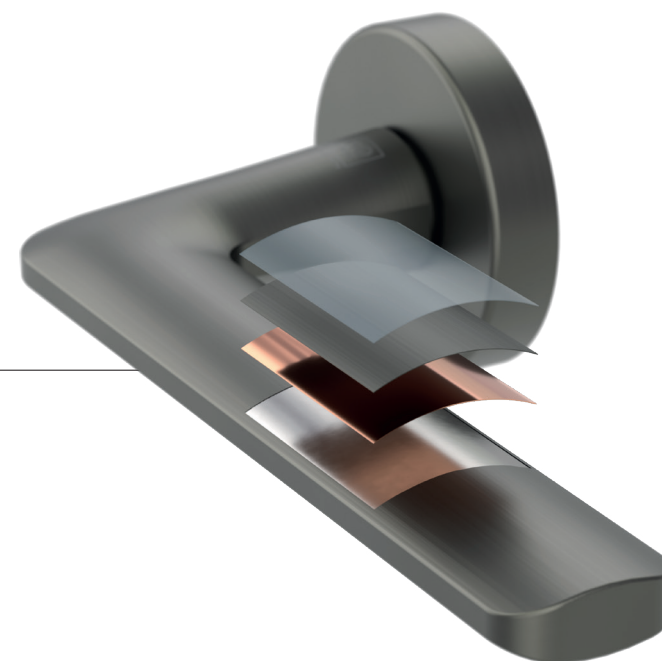


SOFT2TOUCH: FEEL THE DIFFERENCE.

Producing a pleasing feel to a door handle is as much about the finish as its shape. The soft2touch premium surface combines a silky, matt finish with a luxuriously soft feel. Handles finished with soft2touch look and feel luxurious – especially in the Cashmere Grey tone.

SOFT2TOUCH KEY BENEFITS

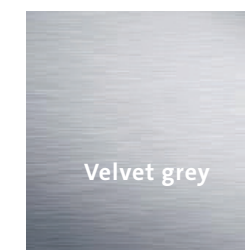
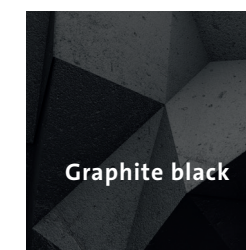
- _ New colours: **Cashmere Grey, Velvet Grey** and **Graphite Black**
- _ Particularly pleasant to the touch thanks to **luxuriously soft feel**
- _ **Less cold** to the touch than stainless steel
- _ **Silky matt** appearance



A SILKY SURFACE, ONE COAT AT A TIME

- 3. Protection sealed in**
Preserves brightness, ensures durability and protects against finger prints
 - 2. Pigmentation**
Selected colour tone, applied with a galvanic process
 - 1. Undercoat**
Brushed to achieve a satiny lustre
- Base form: cast zinc body**
A solid core with no rough edges or seams

NEW COLOURS IN THREE TONES



Learn all about soft2touch at
GRIFFWERK.DE

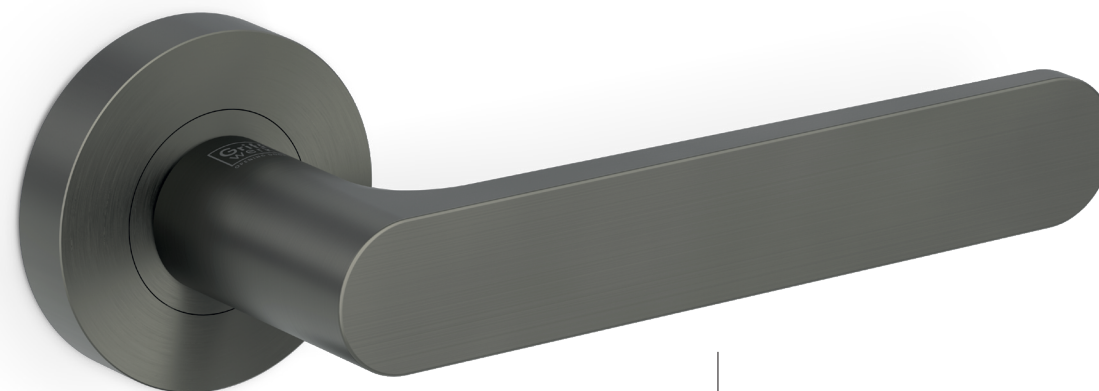
CLEAN COSINESS

Bright and inviting, homely but never cluttered. The interior design is reduced to the bare essentials. Wood adds warmth to the light grey tones of the colour concept, patterned fabrics break up the areas of brightness, and the rug provides a plush accent – snug Nordic simplicity.



AVUS THE LEGEND

This door handle takes its name from the former Berlin motor racing track, which witnessed so many pioneering achievements. The track featured two large radius curves, which now inspire the stylised contours of the front of the handle. The rear is gently rounded to accommodate the hand.



soft2touch in Cashmere grey



The reworked design is based on clean lines.

AVUS with the soft2touch finish is available in three colours and two rose forms (round or square).



Velvet grey

Cashmere grey

Graphite black



Ultra-slim, just 2mm deep

AVUS PIATTA S ULTRA-FLAT & PURE

PIATTA S has a retaining spring and is particularly simple to install thanks to the SMART KLIPP system.

Installation instructions and additional PIATTA shapes available at GRIFFWERK.DE





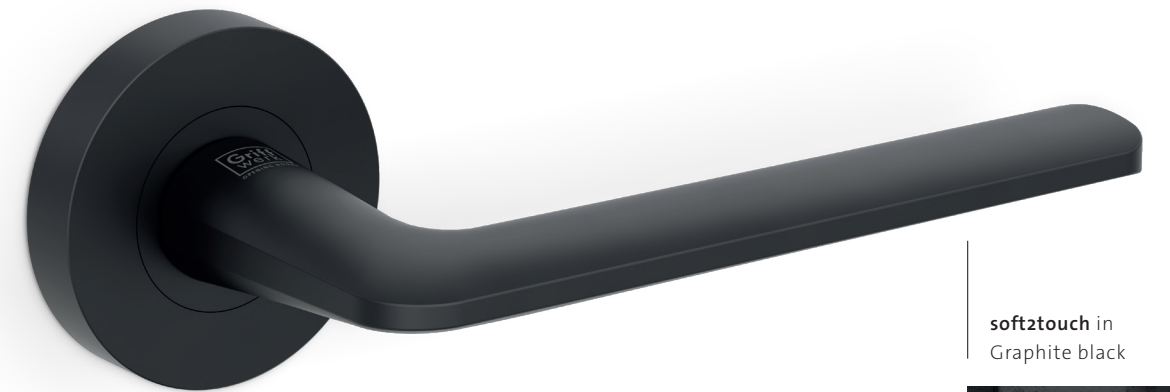
LOFT LIVING

Natural daylight from tall windows, complemented by industrial components and robust materials – loft spaces bring a city-centre feel indoors. The underlying colours for this style are muted tones such as Smoke grey, Graphite and Black. The look is brought to life with simple furniture, set off by incidental pieces with an industrial look.

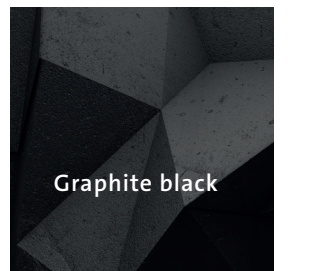


REMOTE EXCEPTIONALLY SLENDER

A broad top surface provides a solid grip. However, we also wanted a form that consumed less space, paring back the height to produce a much flatter handle. The transition to the throat of the handle is contoured with dynamic lines that create a defined but gentle edge.



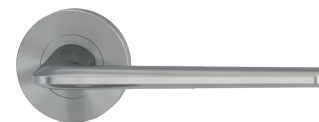
soft2touch in
Graphite black



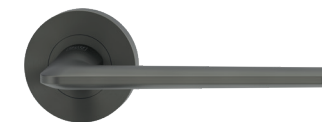
Graphite black

Exceptionally slender design, with a generous, pleasant palm rest and a soft, rounded form.

REMOTE WITH THE SOFT2TOUCH FINISH IS AVAILABLE IN THREE COLOURS AND WITH TWO ROSE FORMS (ROUND OR SQUARE).



Velvet grey



Cashmere grey



Graphite black

NORDIC ELEGANCE

Simple, carefully selected eye-catching pieces are spaced generously around the room. Cool marble and warm timber and fabrics create an enthralling contrast. The result is timeless elegance.

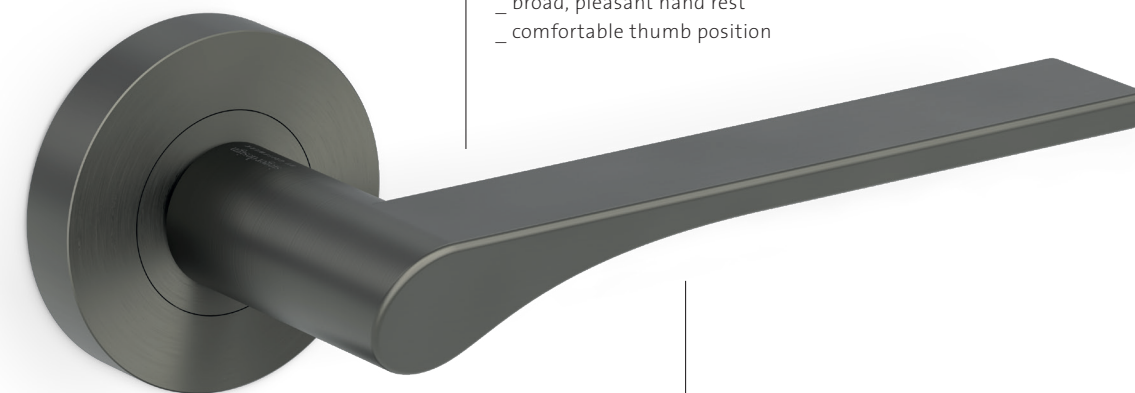


LEAF LIGHT DELICATE

Inspired by the fluttering wings of birds, LEAF LIGHT reveals a delicate yet independent character. The design features the contrasting lines of a curved lower contour and horizontal top line. In the horizontal plane the hand finds a comfortable resting surface, while the thumb falls naturally on the slanted front.

sieger design
by GRIFFWERK

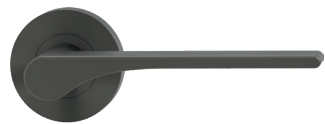
- _ light, dynamic yet elegant design
- _ broad, pleasant hand rest
- _ comfortable thumb position



softtouch in Cashmere grey



LEAF LIGHT with the softtouch finish is available in three colours and two rose forms (round or square).



Velvet grey

Cashmere grey

Graphite black



SIEGER DESIGN

Based in Schloss Harkotten, tucked away in the Münsterland, sieger design has been producing brand concepts and products for over 30 years, for clients such as Dornbracht, Alape, Duravit, Trilux and Conmoto.

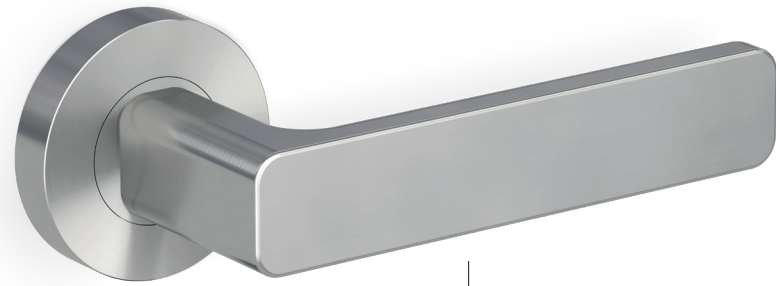
"Our designs are archetypal, timeless and function, yet also poetic and life-affirming."

CHRISTIAN & MICHAEL SIEGER

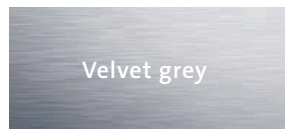
MINIMAL MODERN

MINIMALISTIC

MINIMAL MODERN is an up-to-date and contemporary interpretation of a door handle that blends seamlessly into any living environment. The minimalist basic architectural form features charming gentle curved details.



soft2touch in Velvet grey

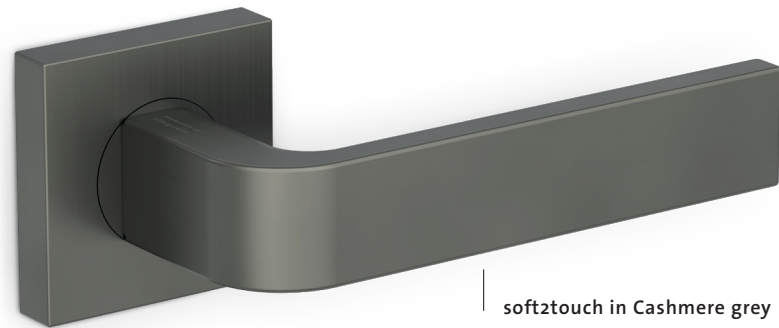


sieger design
by GRIFFWERK

- _ light, dynamic
- _ elegant design
- _ broad, pleasant hand rest
- _ comfortable thumb position

GRAPH GEOMETRIC

Elegant and uncomplicated – the hallmarks of the GRAPH door handle. Its clear geometric design seeks a formal relationship with the door leaf. GRAPH will not steal the limelight, blending self-assuredly into the background.



soft2touch in Cashmere grey



sieger design
by GRIFFWERK

- _ gently rounded for a pleasing touch
- _ belt-like transition of front surface with no edges
- _ flowing, yet clearly pared back form

MINIMAL MODERN with the soft2touch finish is available in three colours and with two rose forms (round or square).



GRAPH with the soft2touch finish is available in three colours with two rose forms (round or square).



Velvet grey

Cashmere grey

Graphite black



INVITING SIMPLICITY

The more stressful life is outside, the more we crave a relaxing space at home. Wood, ceramics and plush materials in warm creams, beiges and browns combine to create your sanctuary.



MINIMAL CHIC

Less clutter, more clarity – simplicity creates space at home. The use of structured materials and soft touches reduces the severity of the look. Creating space for blissful relaxation.

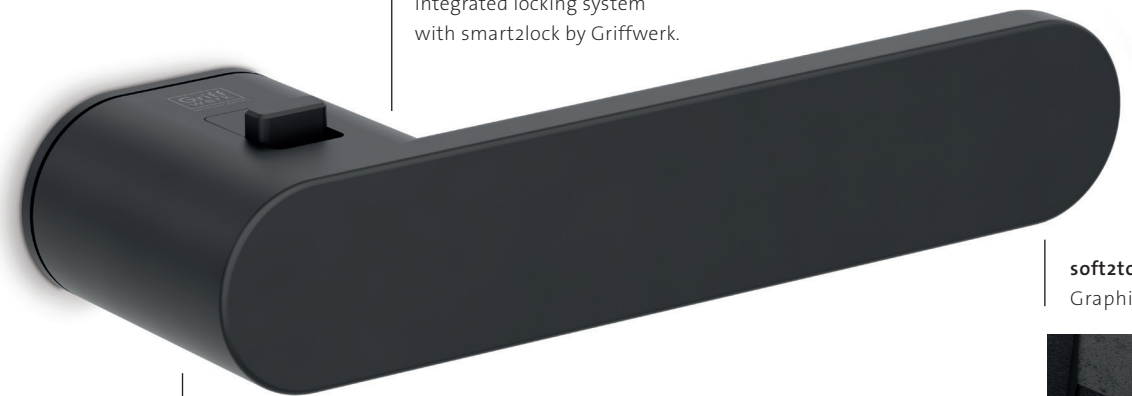
AVUS ONE TOTALLY ROSELESS

ONE is all about maximum reduction, getting down to the bare essentials for this design line. The rose has been dispensed with completely. The handle now emerges from the door as a singular form thanks to our new system, which nevertheless fits all doors with standard locks. A handle design for the most discerning demands.



smart2lock by GRIFFWERK

Integrated locking system with smart2lock by Griffwerk.



A rose-free optic with hidden mounting plate.

soft2touch in Graphite black

Graphite black

AVUS ONE with the soft2touch finish is available in two colours.



R8 ONE with the soft2touch finish is available in two colours.



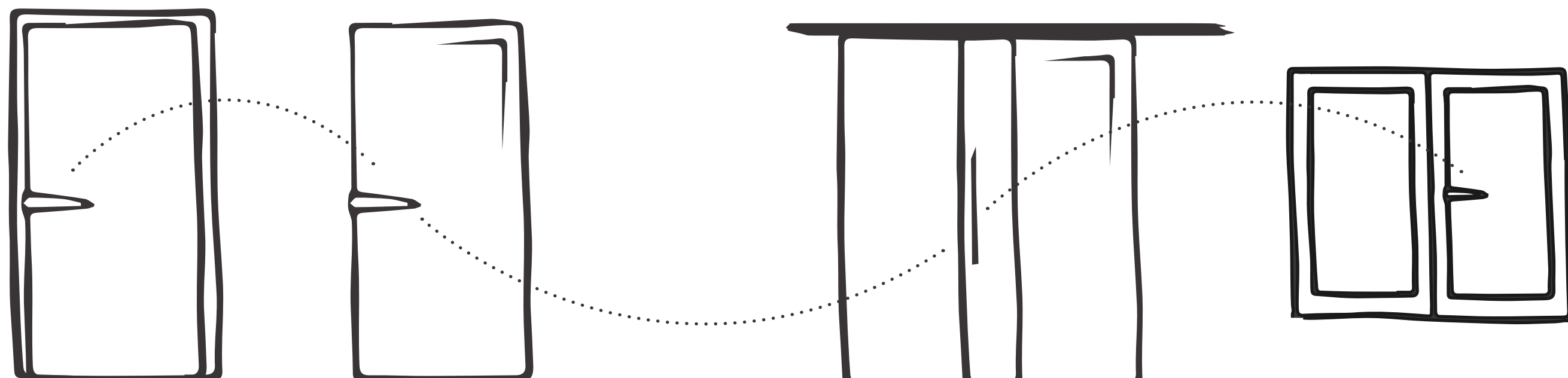
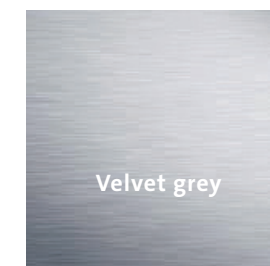
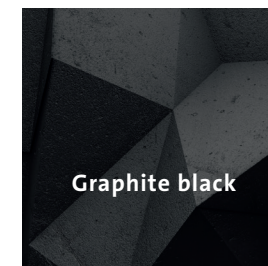
Velvet grey

Cashmere grey

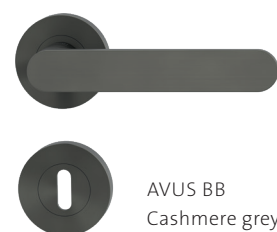
Graphite black

ONE LOOK FOR THE ENTIRE HOME.

When you are looking for something special, there can be no compromises. Our range lets you maintain consistency throughout your home with handles in the colour of your choice.



WOODEN DOOR



AVUS BB
Cashmere grey

HINGED GLASS DOOR



PURISTO S UV LOCK CASE
Cashmere grey

SLIDING GLASS DOOR



PLANE AIR SLIDING DOOR SYSTEM



BAR HANDLE
LUCIA GST
Cashmere grey

WINDOW



AVUS WITH WINDOW OLIVE
Cashmere grey

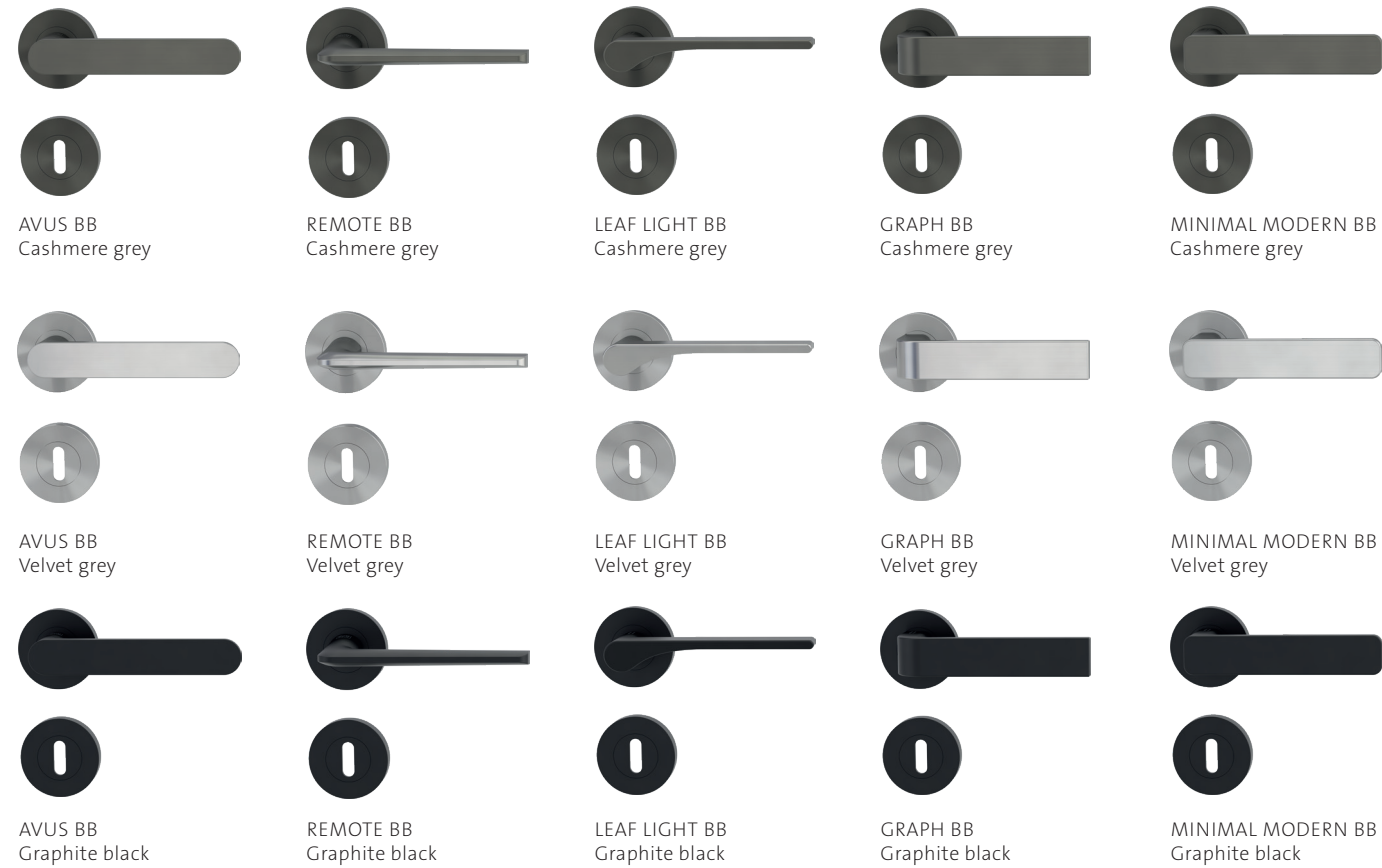
OUR RECOMMENDATION
_2- and 3-part hinges for
Wooden and steel frames
_Color matched on
Cashmere grey and Graphi-
te black





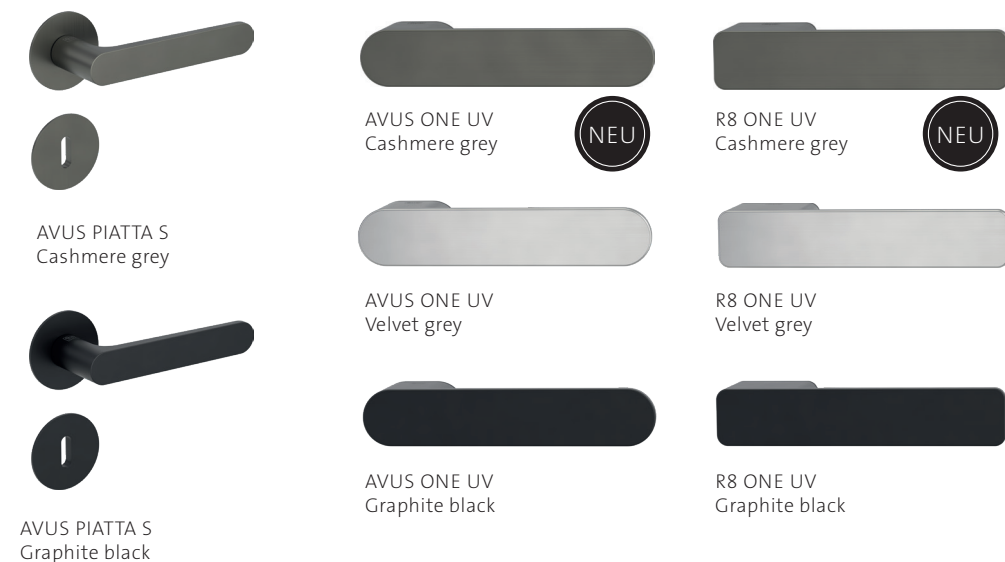
SOFT2TOUCH – PRODUCT OVERVIEW

DOOR HANDLES



PIATTA S

ONE DOOR HANDLES



ALL VERSIONS ALSO AVAILABLE
WITH SMART2LOCK

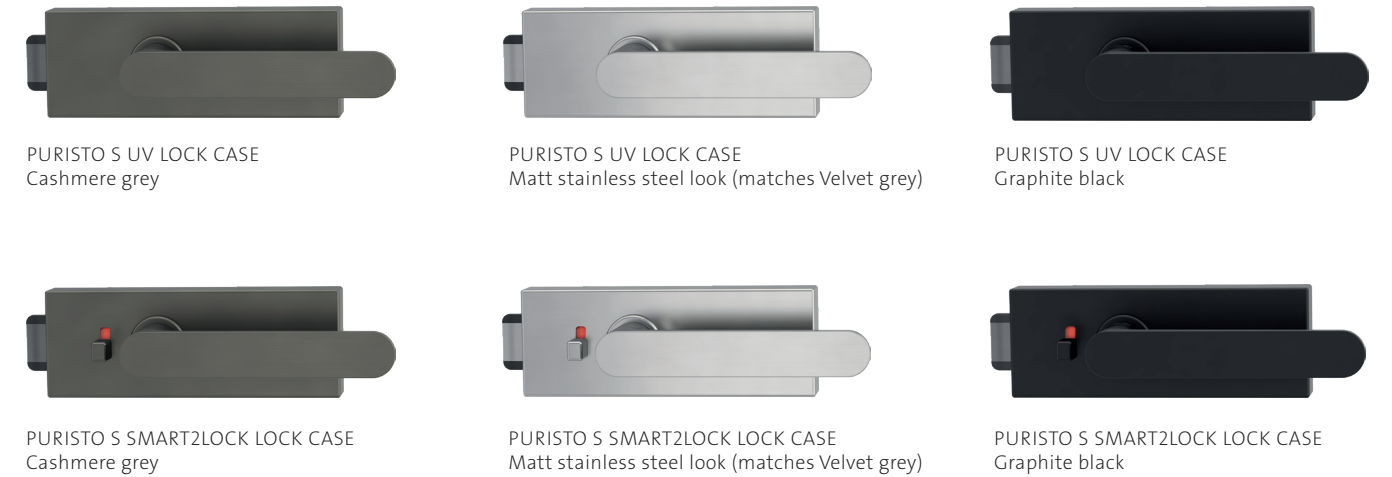


Integrated locking system

- _ no key rose
- _ easy single-handed operation
- _ simple emergency unlocking
- _ no more lost keys
- _ compatible with all standard mortice locks

MATCHING PRODUCTS

PURISTO S LOCK CASE



PLANE0 120 COMFORT SLIDING DOOR SYSTEM



HINGES



BAR HANDLES & RECESSED PULL HANDLES



