



smart2lock
by GRIFFWERK



SLIDE. SHUT.
LOCK.

PLANEO SMART2LOCK
LOCK FOR SLIDING DOORS



PRIVACY AT THE TOUCH OF A BUTTON: PLANE0 SMART2LOCK

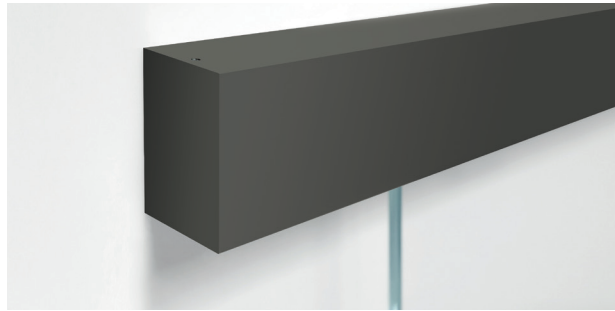
LOCK INTEGRATED IN HANDLE FOR PLANE0 120

The perfect combination of smart technology and pure design – smart2lock.
Ensures privacy in rooms with sliding doors, so you can push a button for a moment of peace.

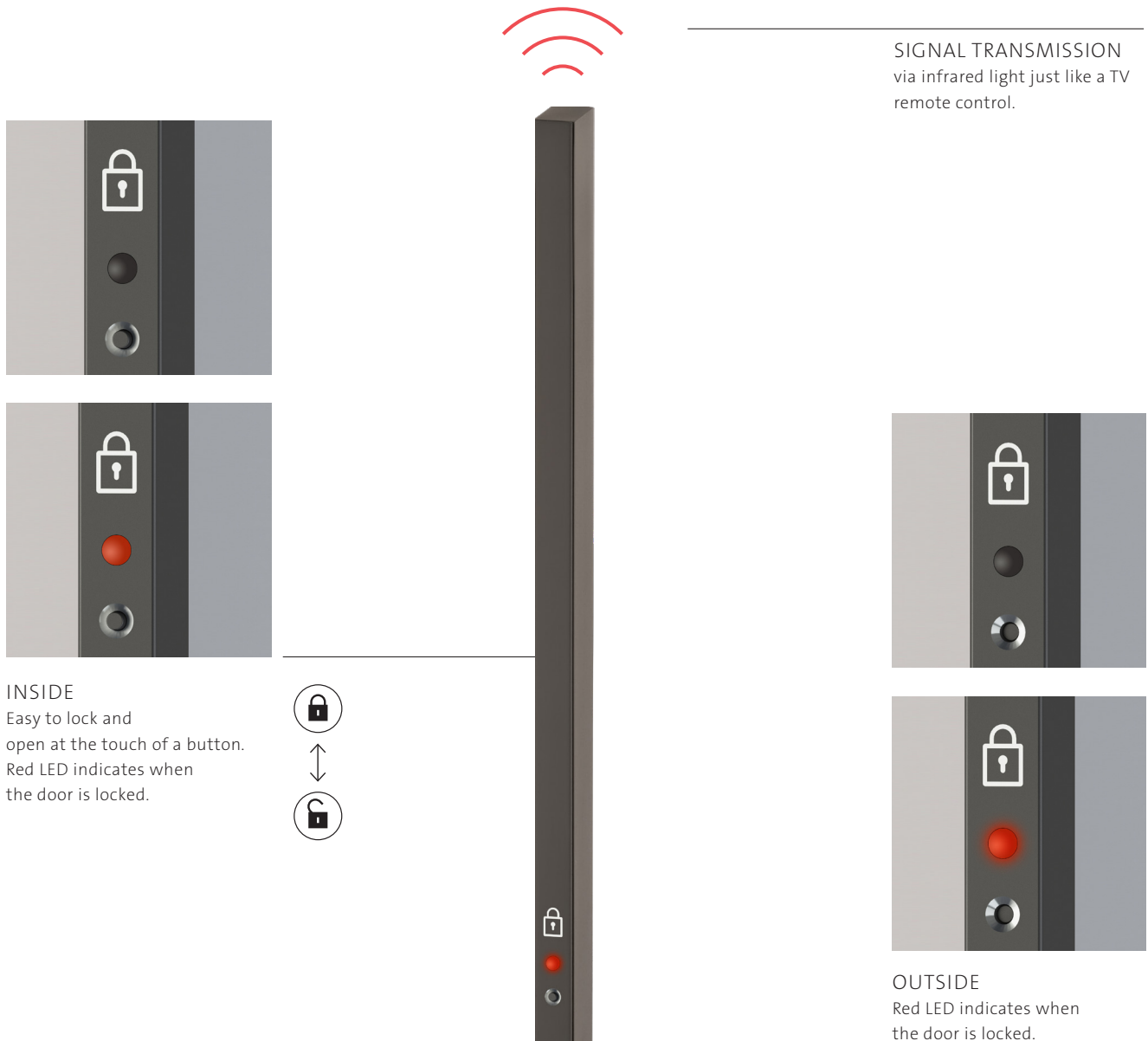
SMART TECHNOLOGY – INVISIBLY INTEGRATED

smart2lock
by GRIFFWERK

A solution with no need for complex construction on the wall and with no compromises on design. PLANE0 smart2lock creates maximum benefit but remains invisible.



THE LOCK
engages invisibly within the
sliding system via an invisible
electric motor.





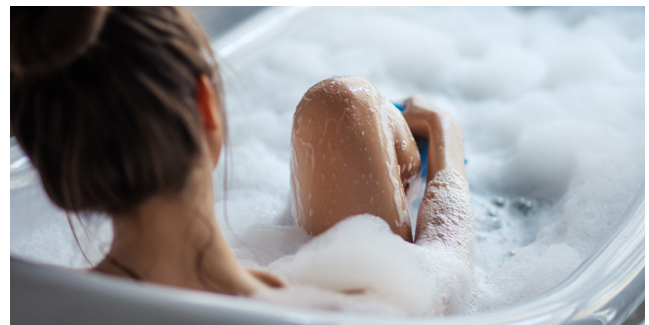
PLANE0 SMART2LOCK KEY BENEFITS

- _ **Just click for peace** – privacy for rooms with sliding doors
- _ Easy **single-handed operation**
- _ Simple **emergency unlocking** and mechanical **panic opening**
- _ Suitable for all **PLANE0 120** including **retrofit option**
- _ **LED busy/engaged indicator** inside and out
- _ Very long **battery life**
- _ **No electromagnetic fields**

TIME FOR YOURSELF.



BEDROOM



BATHROOM

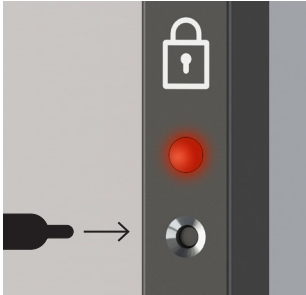


HOME OFFICE

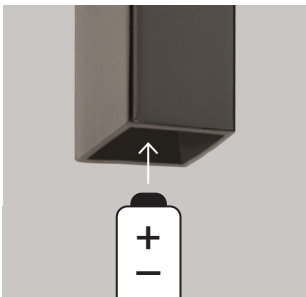


PLAYROOM

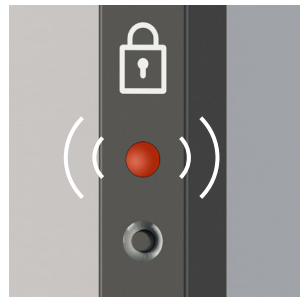
TECHNICAL CHARACTERISTICS



EMERGENCY UNLOCK
Fast and simple to unlock in emergencies.
Panic function: emergency unlock also operates mechanically



BATTERY CHANGE
Easy to change the batteries in the bar handle and lock in the track.



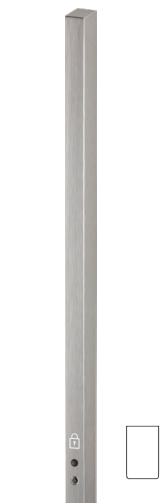
BATTERY INDICATOR
LEDs on the bar handle and top of the track flash when battery level is low. The lock can be operated 50 more times after this indication.

- _ Suitable for Planeo 120
- _ Retrofit to Planeo 120
- _ Each part uses two standard AA and AAA batteries (batteries not included)
- _ Bar handle attaches using adhesive
- _ Battery life under normal usage* approx. 4 years

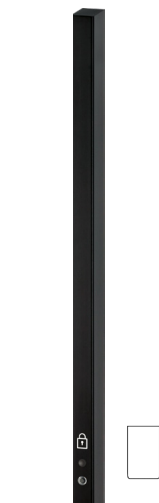
NEW

OUR RECOMMENDATION
For maximum privacy we recommend **combining with PLANE0 AIR SILENT.**

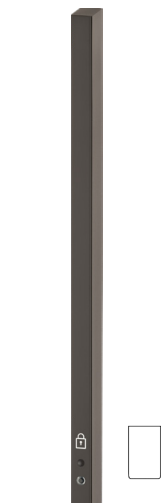
VARIANTS



PLANE0 GS 49017
SMART2LOCK
Matt stainless steel
11 x 700 x 18 mm



PLANE0 GS 49017
SMART2LOCK
Graphite black
11 x 700 x 18 mm



PLANE0 GS 49017
SMART2LOCK
Cashmere grey
11 x 700 x 18 mm

PLANE0 AIR SILENT

SEALS FOR SLIDING DOORS



- _ **Noise insulation**, comparable to a wood door
- _ **Seals in vapours and odours:**
Ideal for kitchens and bathrooms
- _ **Prevents draughts**, retains heat in the room
- _ Greater privacy thanks **to side privacy shield**
- _ System invisible from **outside**, retains the pure look of the door

* 20 operations at 5 minutes locked each day

