

TECHNOLOGY & DISTRIBUTION



**NEW**  
SEALS  
FOR  
SLIDING DOORS  
INNOVATION  
2020

THE SLIDING DOOR THAT SHUTS TIGHT.  
**PLANE0 AIR SILENT**



# NEW: PLANEO AIR SILENT SEALS FOR SLIDING DOORS

A typical argument against installing a sliding door is the lack of an effective seal. Even when the elegant appearance and other advantages such as accessibility and space-saving design are otherwise impressive. Our **PLANEO AIR SILENT** provides the solution.

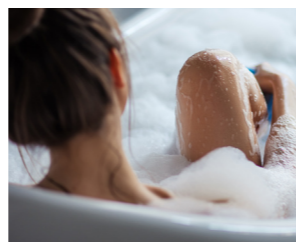
## BENEFITS FOR YOUR CUSTOMERS

- \_ **Noise insulation**, comparable to a wooden door
- \_ **Seals in vapours and odours:**  
Ideal for kitchens and bathrooms
- \_ **Prevents draughts**, retains heat in the room
- \_ Greater privacy thanks to **side privacy shield**
- \_ System **invisible** from outside, retains the pure look of the door

## RANGE OF APPLICATIONS



KITCHEN



BATHROOM

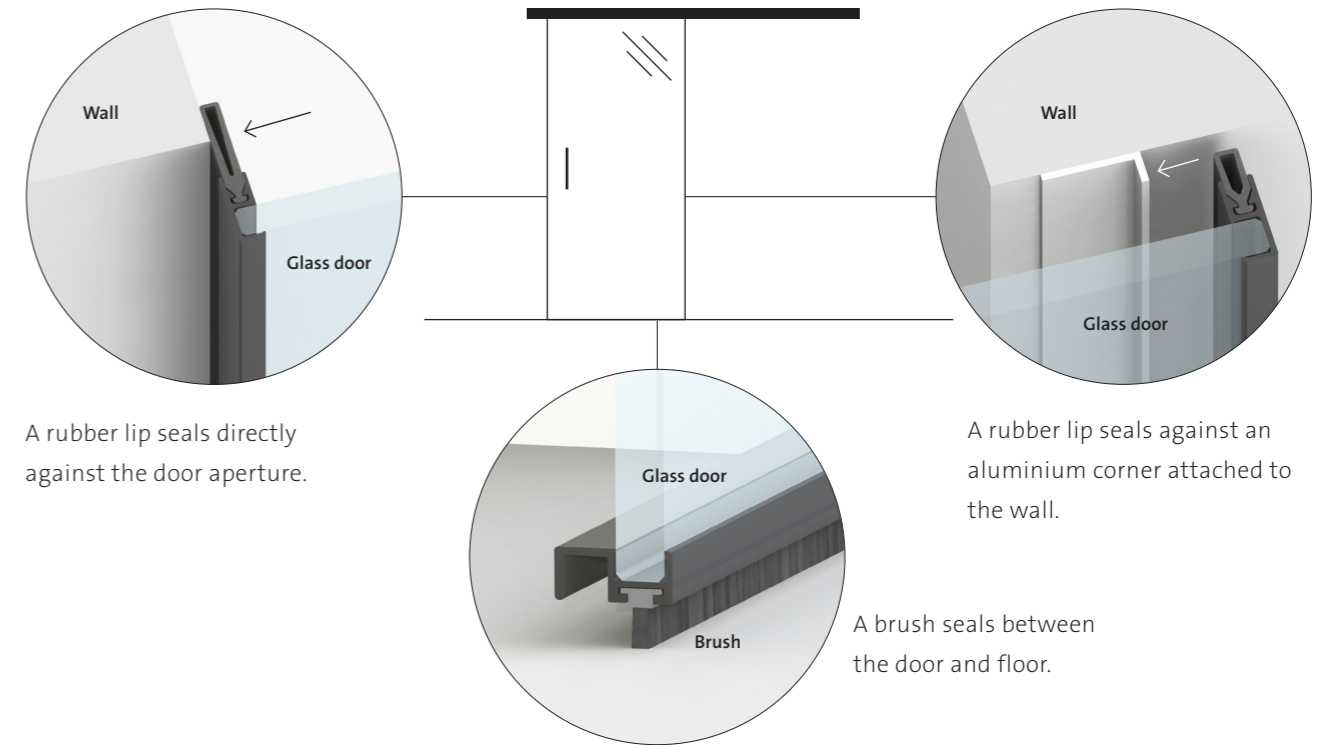


HOME OFFICE

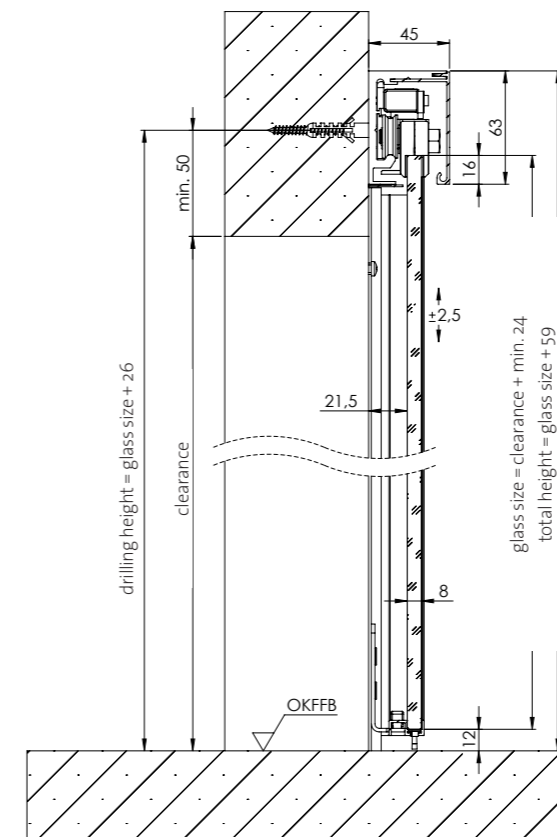


HOBBY ROOM

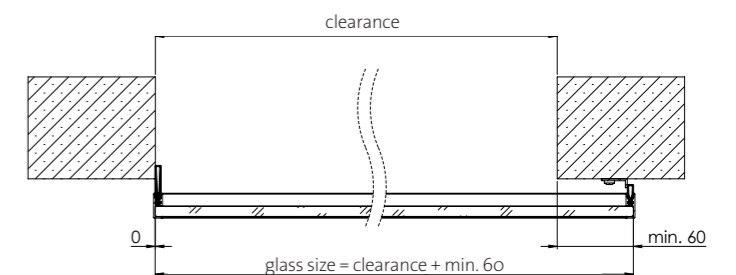
## THE SYSTEM – HIGHLY EFFECTIVE, LOW VISIBLE IMPACT



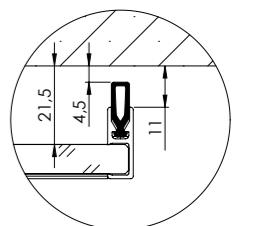
## PRODUCT CHARACTERISTICS



- \_ Suitable for Planeo 120
- \_ Wall mounting, single-leaf
- \_ For 8 mm glass
- \_ Maximum glass door dimensions: 1200 x 2200mm
- \_ Available in standard and custom sizes
- \_ Available with soft close



**NOTE:** For technical reasons PLANEO AIR SILENT requires a maximum spacing of 4.5 mm from the wall. Spacer sets for mounting against skirting boards etc. can be supplied from Q4.



Simple to buy with great advisory tools: Brochure PLANEO AIR

NEW



PLANEO AIR SILENT

INNOVATION 2020



PLANEO AIR SILENT Matt stainless steel



PLANEO AIR SILENT Cashmere grey

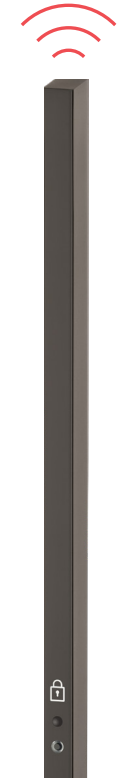


PLANEO AIR SILENT Graphite black

PLANEO SMART2LOCK BAR

OUR RECOMMENDATION  
For maximum privacy we recommend combining with the smart2lock bar handle.

NEW



smart2lock by GRIFFWERK

INTEGRATED LOCKING SYSTEM

- \_ Peace at the touch of a button – privacy with sliding doors
- \_ Easy single-handed operation
- \_ Simple emergency unlocking and mechanical panic opening
- \_ Suitable for all PLANEO 120 including retrofit option
- \_ LED busy/engaged indicator
- \_ Very long battery life
- \_ No electromagnetic fields



PLANEO GS 49017 smart2lock  
Graphite black  
Matt stainless steel  
Cashmere grey



IMF\_SILENT\_B2B\_EN\_790040103\_final | Product images provided as illustration and may deviate slightly in form and colour from products supplied. Errors, technical modifications and printing/layout errors reserved.