

# GLASS DOOR SYSTEMS



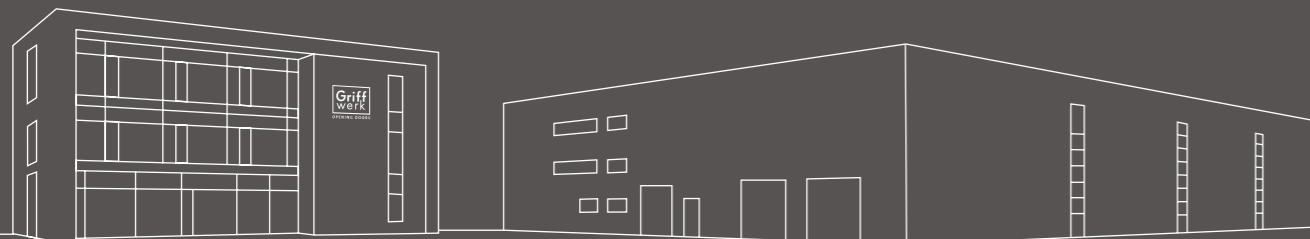
ROTATING – SLIDING – SWING

EDITION 20.V2

# Glass opens - design connects

Glass is gaining popularity in a contemporary living ambience. Natural light can flow into the rooms, so rooms appear bigger and brighter. The accents of the glass doors are the fittings. Considerate design creates a stylish unit with the room.

That you can use the same fitting with doors made from wood and glass, GRIFFWERK has a big choice of combinable designs in one product line.




---

FITTINGS FOR SWING DOORS

Glass door lock PURISTO S	Page 4
Glass door lock GATE by sieger design	Page 6
Glass door lock FRAME	Seite 8
Glass door lock CUBE	Seite 9
Glass door lock CLASSICO	Page 10
Glass door lock PURISTO	Page 11
Glass door lock CREATIVO	Page 12
Glass door lock SMILE	Page 13
Glass door lock FABRICO	Page 13
Glass door lock QUATTRO	Page 14
Swing door fitting	Page 15

---

FITTINGS FOR SLIDING DOORS

Sliding door system PLANELO LOFT	Seite 16
Sliding door system PLANELO AIR	Seite 18
Sliding door system PLANELO AIR SILENT	Seite 20
Sliding door system PLANELO 40	Seite 22
Sliding door system PLANELO 60 PRO	Page 24
Sliding door system PLANELO 120 WALL	Page 26
Sliding door system PLANELO 120 CEILING	Page 27
Sliding door system PLANELO 120 GLASS OPTIONS	Page 28
Sliding door system PLANELO SMART2LOCK	Seite 30

---

INFORMATION

Overview of the sliding door systems	Page 31
Product overview glass hardware	Page 32
Product overview sliding door fittings	Page 33

# PURISTO S

## Form follows comfort



Lock case PURISTO S in surface graphite black here with handle LUCIA GSC

### PRODUCT FEATURES PURISTO S

- Prepared for 8 mm optional 10 mm glass incl. soft lock
- Studio-lock case with 16 and 18 mm of handle guidance
- double handle guidance against shaking of the door handle
- Set with 3-part hinges incl. frame part wood
- UV and WC variation can be used right and left locking
- tested in 200,000 cycles in accordance with DIN EN 12209
- lock case cover in stainless steel

TO THE PRODUCT VIDEO  
ON GRIFFWERK.DE



## ONE-CLICK PRIVACY

- WC-variation can be used both right and left
- suitable for standard drillings studio
- adjustable spring force from soft to heavy
- significantly smaller than standard lock cases
- re-adjustable handle

„Form follows comfort“ may have been the specification for the further-developed design of this extraordinary lock box. The new, comfortable option of closing by 1-hand operation is particularly distinctive. The outer dimensions of the lock box have also been clearly reduced and is suitable for standard studio drillings. The spring force of the door handle can be individual adjusted and the grip position precisely corrected. The toilet variation can be used both right and left.



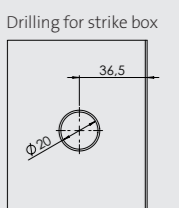
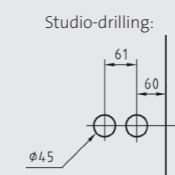
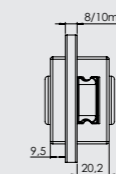
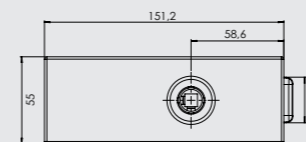
LOCK CASE PURISTO S  
Set with 3-part hinges | STAINLESS STEEL  
MATT | here with handle AVUS EM  
(not included in the set)

LOCK CASE PURISTO S  
Set with 3-part hinges | GRAPHITE BLACK  
here with handle AVUS GSC  
(not included in the set)

LOCK CASE PURISTO S  
Set with 3-part hinges | CASHMERE GREY  
here with handle AVUS KGR  
(not included in the set)

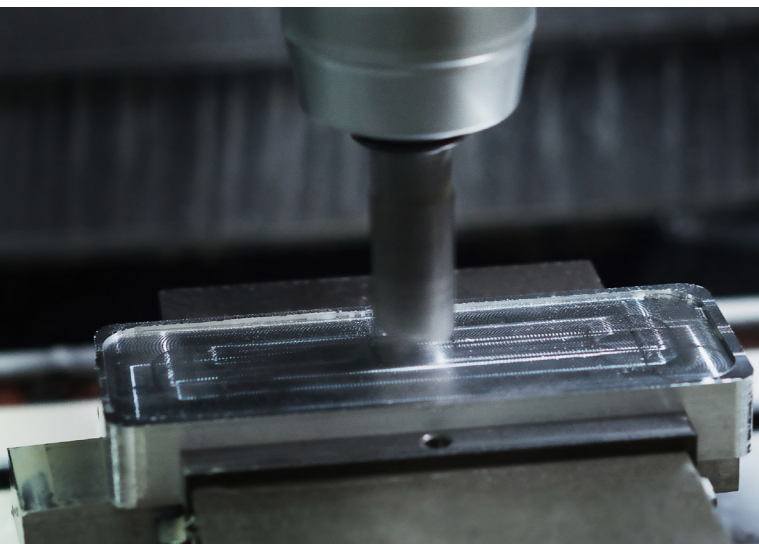
### AVAILABLE IN VARIATIONS

- passage version (UV)
- profile cylinder (PZ)
- WC - lock (WC)
- strike box (GK)



# GATE by sieger design

Reserved presence, existing space



GATE (Design: winner design) was founded in 2014 with two prestigious awards.

Lock case GATE 1.0 (Design: sieger design) here with handle LUCIA

### PRODUCT FEATURES GATE

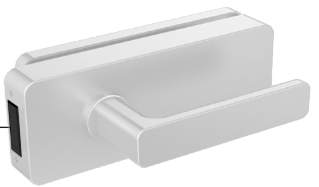
- Prepared for 8 mm optional 10 mm glass incl. soft lock
- Studio-lock case with 16 and 18 mm of handle guidance
- triple stabilized handle guidance against shaking of the door handle
- Set with 3-part hinges incl. frame part wood
- lock case cover cut out of aluminium in stainless steel look
- optionally with magnetic trap available

### MAGNETIC LATCHING TECHNOLOGY – THE MOST SILENT AND STYLISH MANNER OF CLOSING GLASS DOORS



CLOSE SAFELY AND SOFTLY, NO STRIKING

NO VISIBLE STRIKER PLATE ON THE FRAME REQUIRED

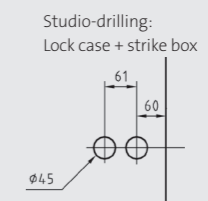
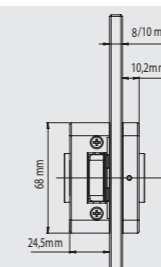
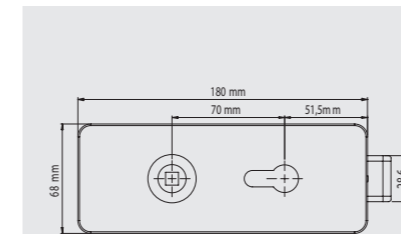


LOCK CASE GATE  
Set with 3-part hinges | STAINLESS STEEL MATT | here with handle LUCIA EM (not included in the set)

## PRECISION MILLED FROM SOLID

Materiality, value and precision form the core statement of this lock box. The cover is cut out of full aluminium to achieve perfect R8-radius. The precise edges and surfaces are partially produced by hand in the production process. Its clearly defined forms are consciously restrained to create a stage for the different door handle types.

### AVAILABLE IN VARIATIONS



# FRAME

It could hardly be more minimalistic



Lock case FRAME in surface nickel matt, here with handle FRAME in velvet grey on the glass door SATIN GREY\_501.

## PRODUCT FEATURES FRAME

- Prepared for 8 mm glass incl. whisper latch
- Lock case for the lever handle FRAME 1.0
- Set with 3-piece hinges incl. wooden frame parts
- Adjustable handle



The lock case FRAME can be combined with the lever handle FRAME 1.0 WC to form a lockable variant.



LOCK CASE FRAME  
NICKEL MATT | Set with 3-part hinges  
here with handle FRAME SG (not included in the set)

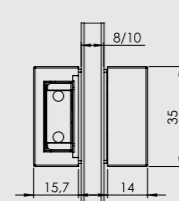
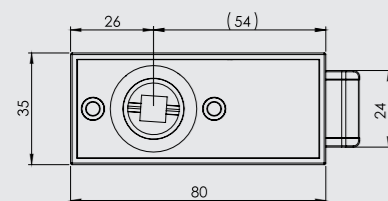


LOCK CASE FRAME  
GRAPHITE BLACK | Set with 3-part hinges  
here with handle FRAME GSC (not included in the set)

## AVAILABLE IN VARIATIONS



passage version (UV)



# CUBE

The smallest lock case

ROTATING DOORS



Lock case CUBE in surface nickel matt, here with handle LUCIA PROF in stainless steel optic matt on glass door SNOWWHITE\_501

## PRODUCT FEATURES CUBE

- Prepared for 8 mm glass incl. whisper latch
- Lock case with 16 mm handle guide
- Set with 3-piece hinges incl. wooden frame parts
- Adjustable handle



LOCK CASE CUBE  
NICKEL MATT | Set with 3-part hinges  
here with handle LUCIA EM (not included in the set)

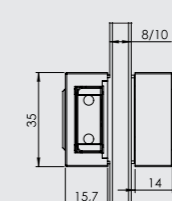
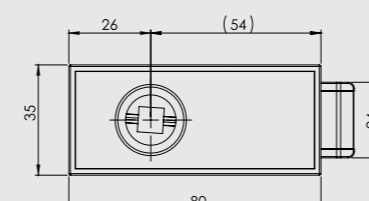


LOCK CASE CUBE  
GRAPHITE BLACK | Set with 3-part hinges  
here with handle LUCIA GSC (not included in the set)

## AVAILABLE IN VARIATIONS



passage version (UV)



# CLASSICO

A door lock that offers “everything”



Lock case CLASSICO 1.0 in surface stainless steel optic matt here with handle LUCIA.

## PRODUCT FEATURES CLASSICO

- Prepared for 8 mm optional 10 mm glass incl. soft lock
- Studio-lock case with 16 and 18 mm of handle guidance
- triple stabilized handle guidance against shaking of the door handle
- Set with 3-part hinges incl. frame part wood
- lock case cover in stainless steel



LOCK CASE CLASSICO 1.0  
Set with 3-part hinges | STAINLESS STEEL  
MATT | here with handle ALESSIA EM  
(not included in the set)

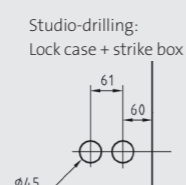
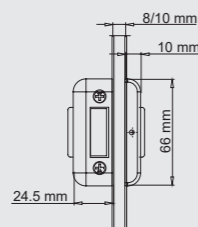
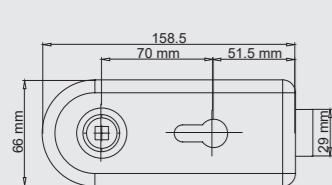
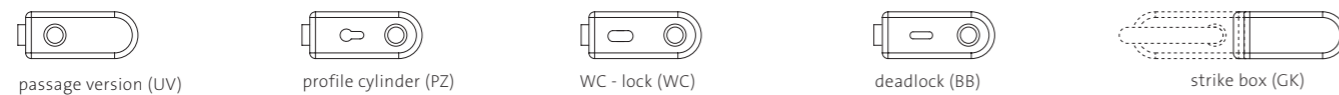


LOCK CASE CLASSICO 1.0  
Set with 3-part hinges | ALU EV 1  
here with handle LUCIA EV1  
(not included in the set)



LOCK CASE CLASSICO 1.0  
Set with 3-part hinges | BRASS OPTIC  
here with handle CAROLA ME-O  
(not included in the set)

## AVAILABLE IN VARIATIONS



# PURISTO

Clear and confident



Lock case PURISTO 1.0 in surface stainless steel optic matt here with handle CARLA.

## PRODUCT FEATURES PURISTO

- Prepared for 8 mm optional 10 mm glass incl. soft lock
- Studio-lock case with 16 and 18 mm of handle guidance
- triple stabilized handle guidance against shaking of the door handle
- Set with 3-part hinges incl. frame part wood
- lock case cover in stainless steel

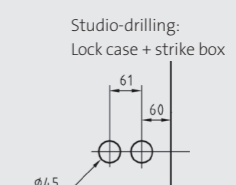
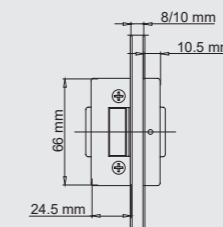
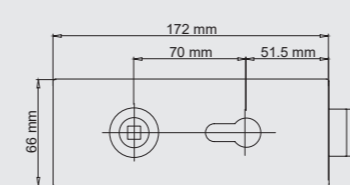
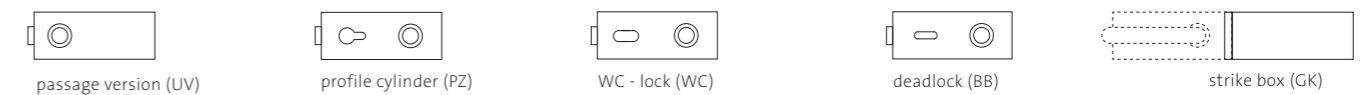


LOCK CASE PURISTO 1.0  
Set with 3-part hinges | STAINLESS STEEL  
MATT | here with handle LOREDANA EP/EM  
(not included in the set)



LOCK CASE PURISTO 1.0  
Set with 3-part hinges | POLISHED STAINLESS  
STEEL | here with handle CUBICO EP  
(not included in the set)

## AVAILABLE IN VARIATIONS



# CREATIVO

Our most creative glass glass-door lock



Lock case CREATIVO 1.0 in surface stainless steel optic matt here with handle ULMER GRIFF (Design: Max Bill)

*max bill*  
BY GRIFFWERK

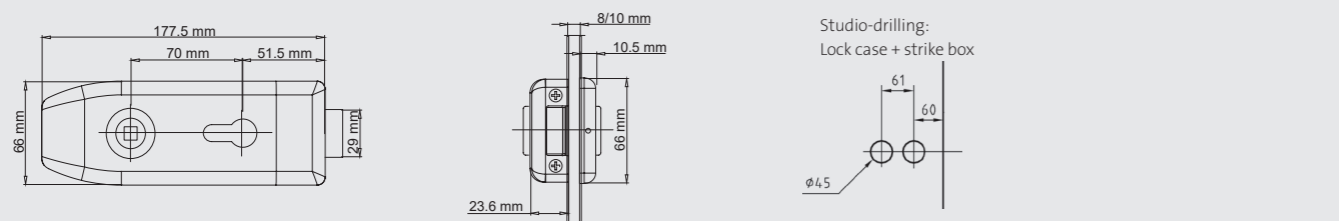
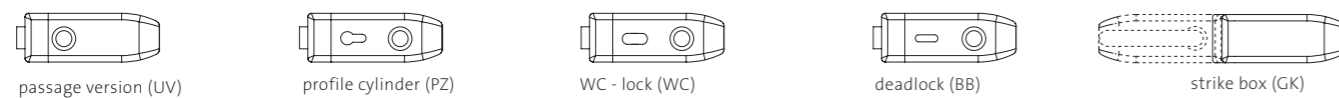
## PRODUCT FEATURES CREATIVO

- Prepared for 8 mm optional 10 mm glass incl. soft lock
- Studio-lock case with 16 and 18 mm of handle guidance
- triple stabilized handle guidance against shaking of the door handle
- Set with 3-part hinges incl. frame part wood
- lock case cover in stainless steel



LOCK CASE CREATIVO 1.0 Set with 3-part hinges | STAINLESS STEEL MATT | here with handle LOREDANA EP/EM (not included in the set)  
 LOCK CASE CREATIVO 1.0 Set with 3-part hinges | BRASS OPTIC here with handle MARISA ME-O (not included in the set)  
 LOCK CASE CREATIVO 1.0 Set with 3-part hinges | POLISHED STAINLESS STEEL | here with handle CAROLA CHR (not included in the set)  
 LOCK CASE CREATIVO 1.0 Set with 3-part hinges | PERLA MATT-SILVER here with handle RAFFAELLA CHR/PS (not included in the set)

## AVAILABLE IN VARIATIONS



# FABRICO & SMILE

## YOUNG LINE range

BEST PRICE

ROTATING DOORS

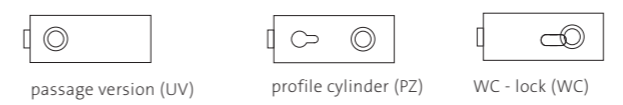


Lock case FABRICO in stainless steel look matt

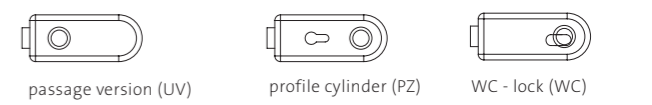


Lock case SMILE in stainless steel look matt

## AVAILABLE IN VARIATIONS



## AVAILABLE IN VARIATIONS

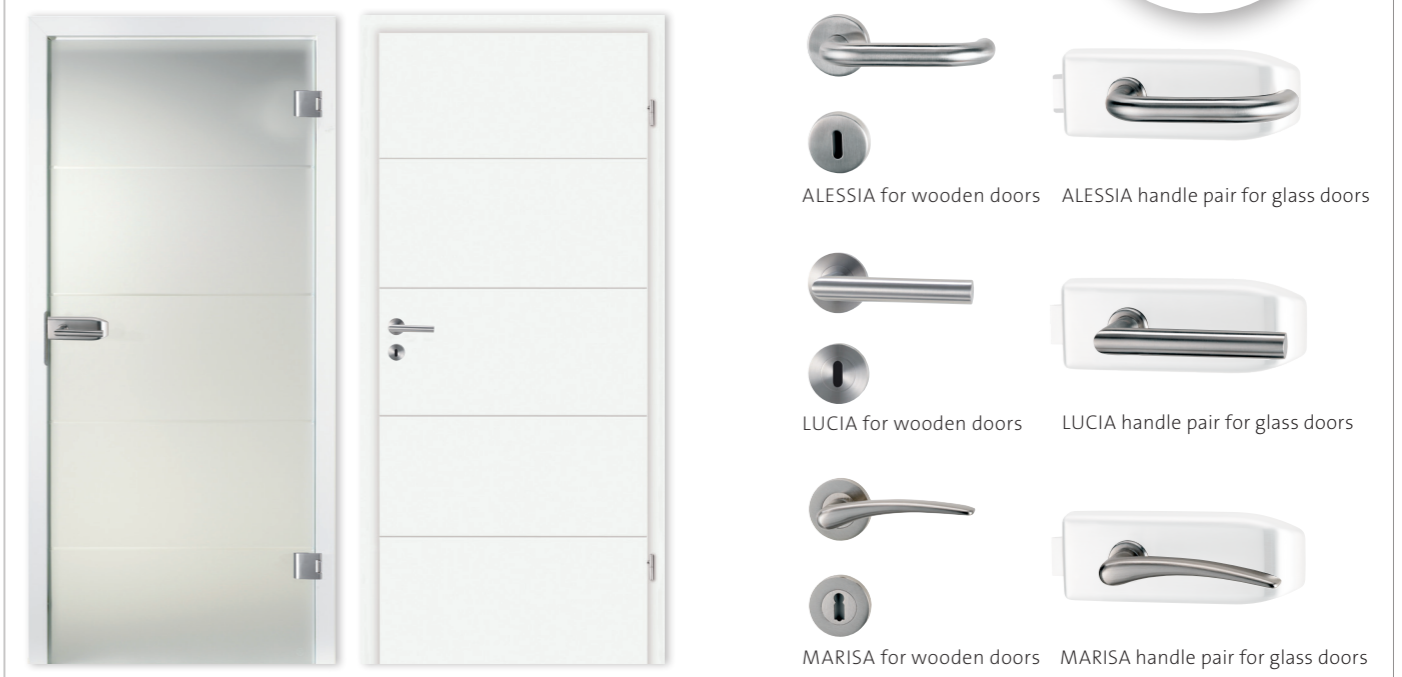


## PRODUCT FEATURES FABRICO & SMILE

- Prepared for 8 mm optional 10 mm glass incl. soft lock
- Studio-lock case with 16 and 18 mm of handle guidance
- triple stabilized handle guidance against shaking of the door handle
- Set with 3-part hinges incl. frame part wood
- lock case cover out of aluminium in stainless steel look

All GRIFFWERK lock cases can be combined with almost every handle from the GRIFFWERK collection. So the same look can be protected on wooden or glass doors.

The design concept:  
**GLASS + WOOD**  
Fitting connects  
Glass- and wooden  
doors



# QUATTRO

The largest in the range

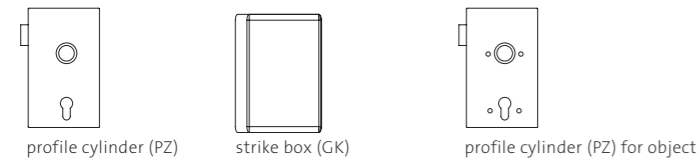


Lock case QUATTRO in surface stainless steel optic matt, here with handle ALESSIA

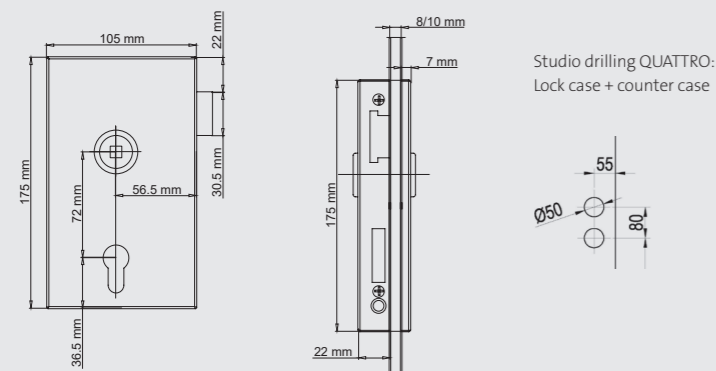
## PRODUCT FEATURES QUATTRO

- Prepared for 8 mm glass incl. latch
- Office-Lock case with 16 mm handle guide
- Tapes not included in the set
- Lock casecover made of stainless steel
- The lock case QUATTRO is also available for screw sets as QUATTRO screw

## AVAILABLE IN VARIATIONS



profile cylinder (PZ)    strike box (GK)    profile cylinder (PZ) for object

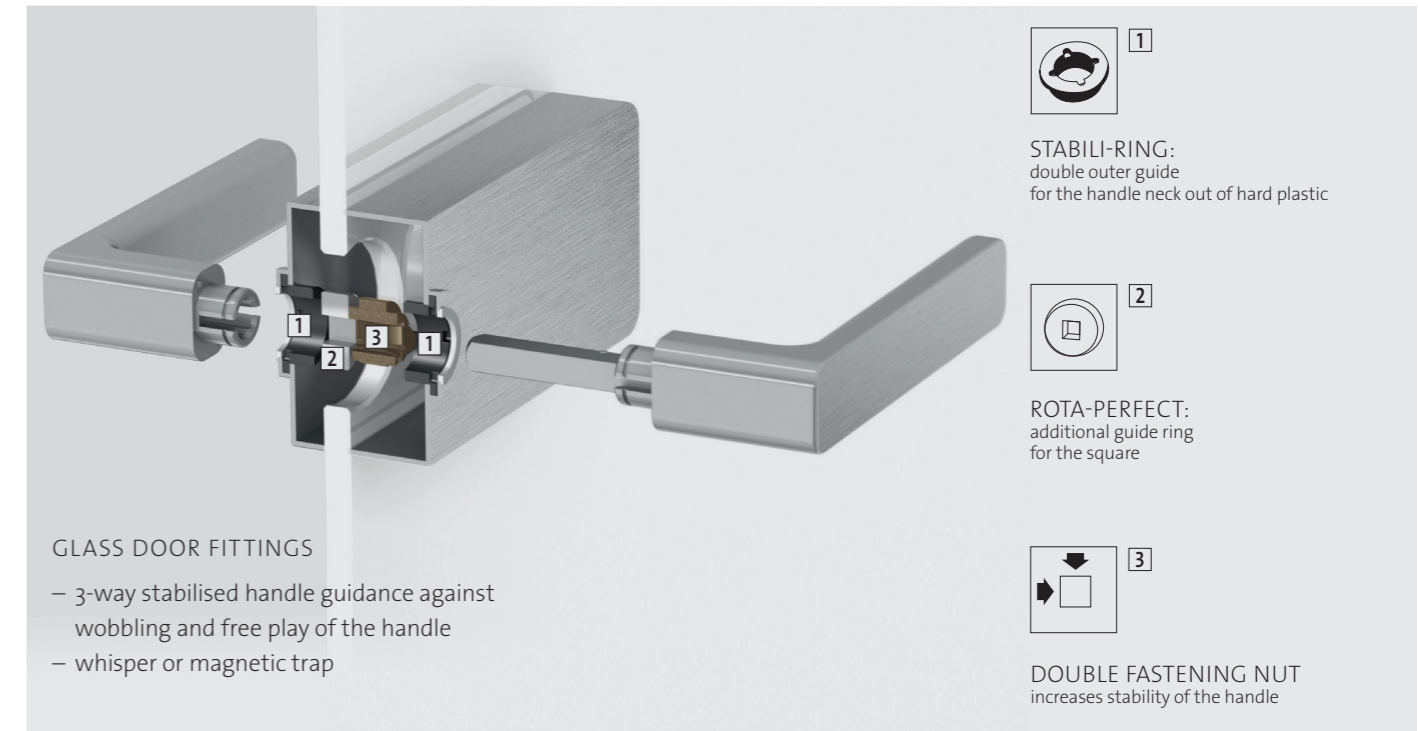


Studio drilling QUATTRO:  
Lock case + counter case

# SWING DOOR SYSTEMS

Quality in detail

SWING DOORS



## GLASS DOOR FITTINGS

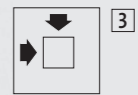
- 3-way stabilised handle guidance against wobbling and free play of the handle
- whisper or magnetic trap



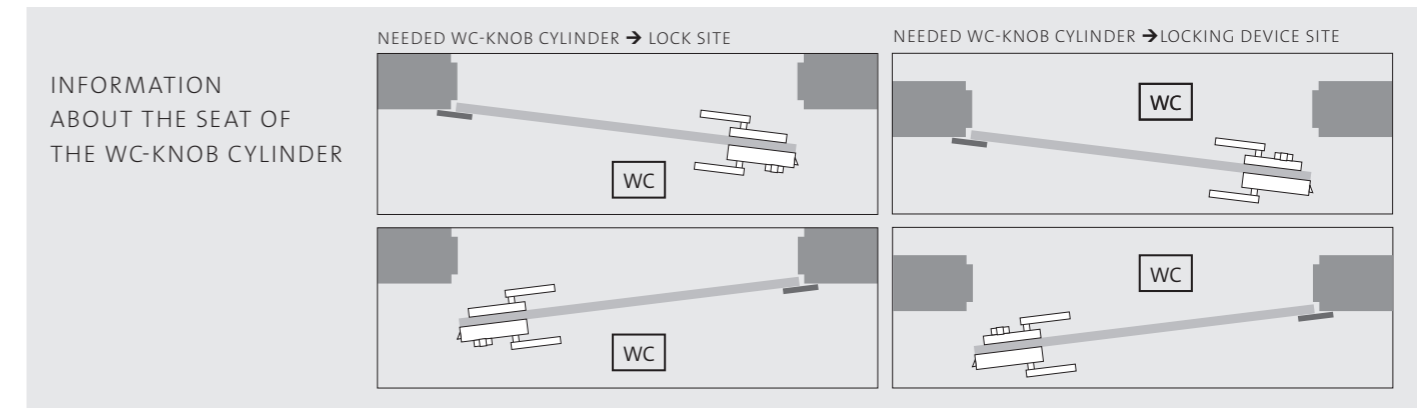
1  
STABI-LING:  
double outer guide  
for the handle neck out of hard plastic



2  
ROTA-PERFECT:  
additional guide ring  
for the square



3  
DOUBLE FASTENING NUT  
increases stability of the handle



## INFORMATION ABOUT THE SEAT OF THE WC-KNOB CYLINDER

SWING DOORS

OVERVIEW OF THE SWING DOOR HINGES	CONNECTION TO THE WALL		CONNECTION TO THE GLASS	
	max. wing weight per hinges pair	60 kg	50 kg	
max. wing width	900 mm	900 mm		
possible door thicknesses	8 mm – 12 mm	8 mm – 12 mm		
locking on 90°	✓	✓		
Position „o“ adjustment	✓	✓		
max. opening width	180°	180°		
surface	nickel matt	nickel matt		

## OVERVIEW OF THE SWING DOOR HINGES



hinges glass/wall

hinges glass/glass



# PLANELO LOFT

Innovative with loft character

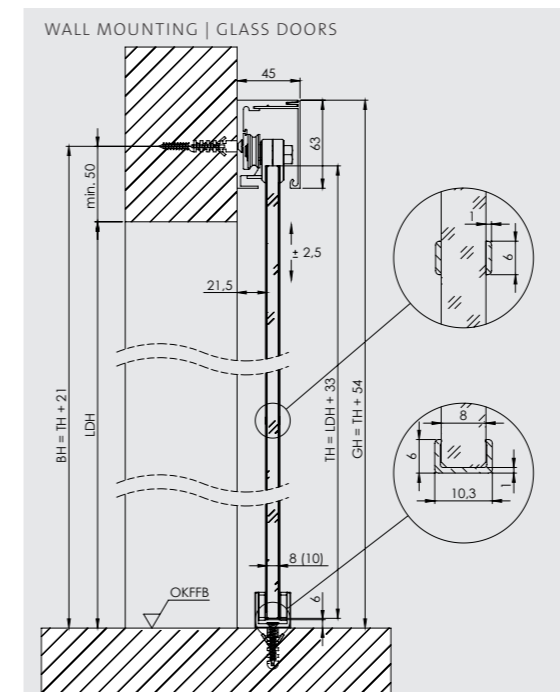


PLANELO LOFT sliding door system, here as 2-wings glass option, variant 4 lines

### PRODUCT FEATURES PLANELO LOFT

- PLANELO LOFT is a design variant for the premium sliding door system PLANELO 120
- A 6 mm wide frame profile made of aluminum embraces the glass edge
- 6 mm wide and 1 mm thick aluminium gridline profiles affixed to the glass

- Design variants: 4 lines, gridlines and individual
- Installation dimensions same as PLANELO 120  
Wall or ceiling mounting (p.26, p. 27) and glass options (p. 28)



### PLANELO LOFT DESIGN VARIANTS:



4 LINES

GRIDLINES

INDIVIDUAL  
(Example illustration)

The horizontal gridlines shall be evenly positioned in order to create five fields of equal size.

The vertical gridline is usually centred across the width of the door.

Individual solutions possible on request

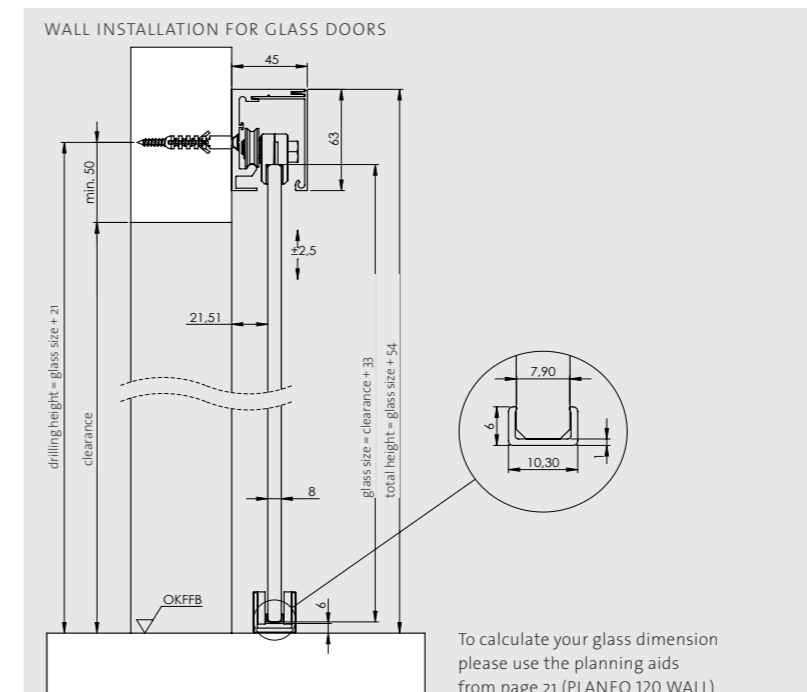
# PLANE0 AIR

## A delicate frame profile



### PRODUCT FEATURES PLANE0 AIR

- PLANE0 AIR is a design variant for the Premium sliding door system PLANE0 120
- a 6 mm wide frame profile made of Aluminium embraces the glass edge.
- Installation dimensions analogous to PLANE0 120 wall or ceiling mounting (p.26, p. 27)
- for ESG and VSG 8 and 10mm
- 1- and 2-wing sliding door systems
- maximum glass door size: 1400 x 2500 mm
- available in standard and special sizes



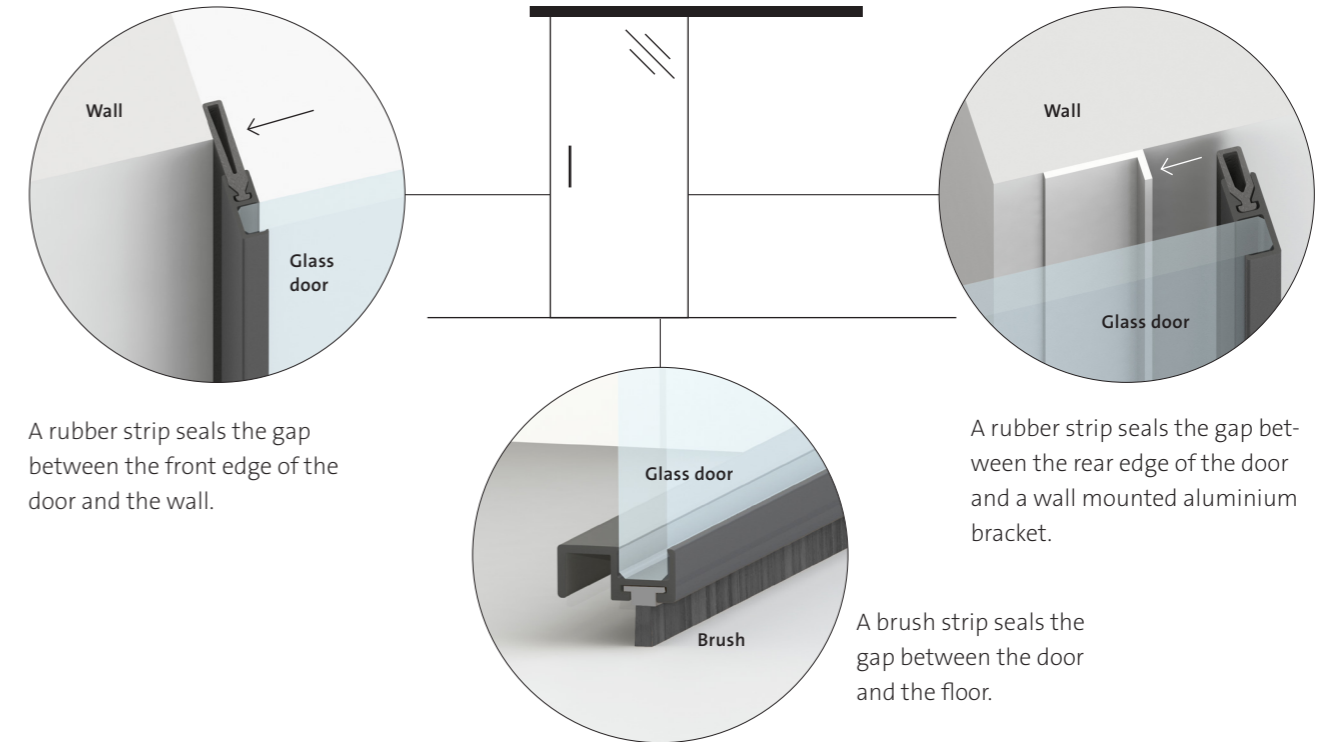
The frame protects the edge of the glass and makes the door more visible as such.

# PLANE0 AIR SILENT

Sealing system for sliding doors

SOFT RETRACTION

**NEW**  
SEALING SYSTEM  
FOR  
SLIDING DOORS  
**INNOVATION  
2020**



PLANE0 AIR SILENT stainless steel optic matt



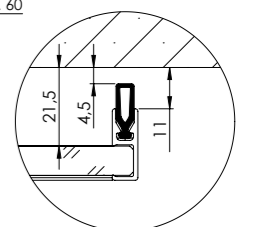
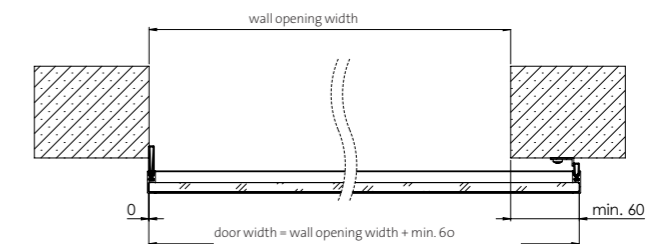
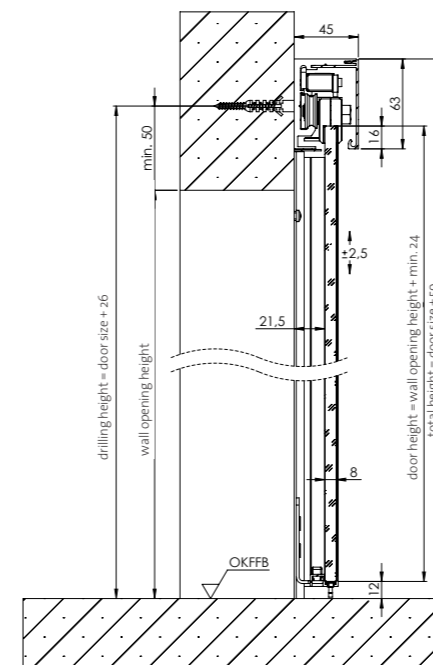
PLANE0 AIR SILENT cashmere grey



PLANE0 AIR SILENT graphite black

**PRODUCT FEATURES  
PLANE0 AIR SILENT**

- suitable for PLANE0 120
- wall mounting, 1-wing
- for glass thickness 8 mm
- maximum glass door size:  
- 1200 x 2200 mm
- available in standard & special sizes
- available with soft close



**IMPORTANT NOTE** Due to technical reasons PLANE0 AIR SILENT a maximum distance of 4.5 mm from the wall. Spacer sets for e.g. mounting before skirting boards are available from Q4 2020.

THE SLIDING DOOR, WHICH SEALS.  
**PLANE0 AIR SILENT**

# PLANE0 40

## Wall mounting for glass or wood doors



AVAILABLE IN VARIATIONS



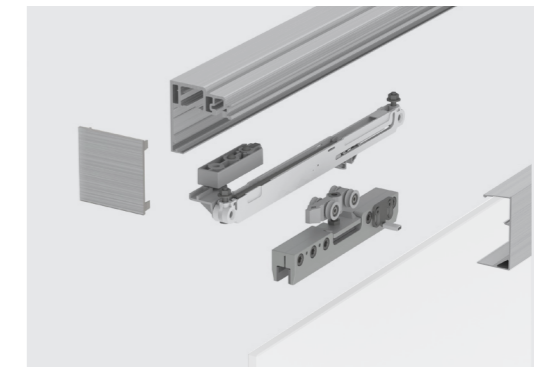
ceiling installation 1-wing

### PLANNING AID FOR GLASS CALCULATION

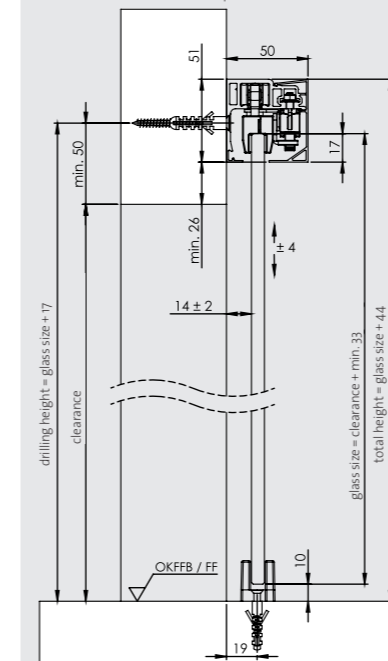
WALL MOUNTING GLASS:	WALL MOUNTING WOOD:
glass width = clear inner width + 60 mm	door width = clear inner width + 60 mm
glass height = internal passage height + 33 mm	door height = clear inner height + 12 mm
glass recess = 17 mm	Door distance to running rail = 7 mm
min. glass width = 750 mm (glass height <= 2058mm)	min. door width = 850 mm
min. glass width = 850 mm (glass height > 2058 – 2200 mm)	min. door width = 28 mm
max. glass thickness = 8 mm	max. door thickness = 40 mm

### PRODUCT FEATURES PLANE0 40 WAND

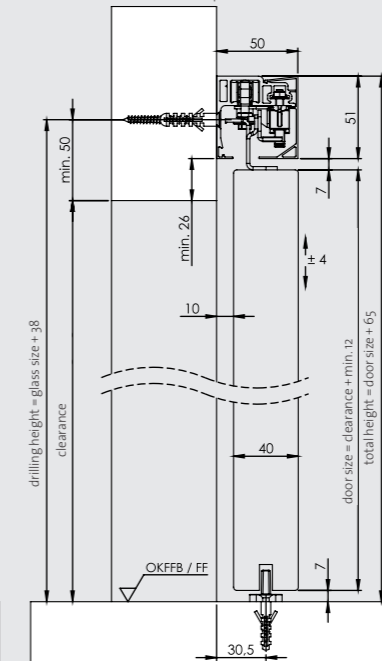
- clamping technique without glass drilling
- 1-wing
- standard lengths 1,9m
- max. 40 kg per door leaf
- with gentle-closing operation
- for 8 mm by default
- surface in stainless steel look and graphite black
- height adjustment in the installed position
- glass door mounting from the front
- spacer profile distance 18,5 mm for mounting in front of the frame



### WALL INSTALLATION | GLASS DOORS



### WALL INSTALLATION | WOODEN DOORS



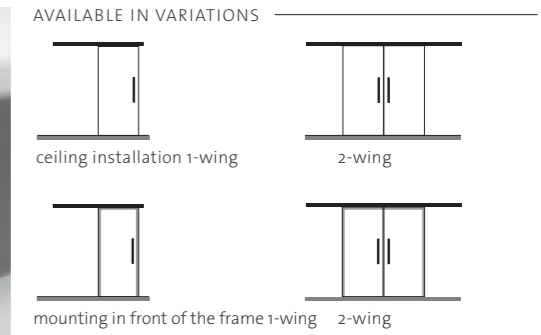
NEW



PLANE0 40 is also available in the surface graphite black

# PLANE0 60 PRO

## FOR GLASS- OR WOODEN DOORS

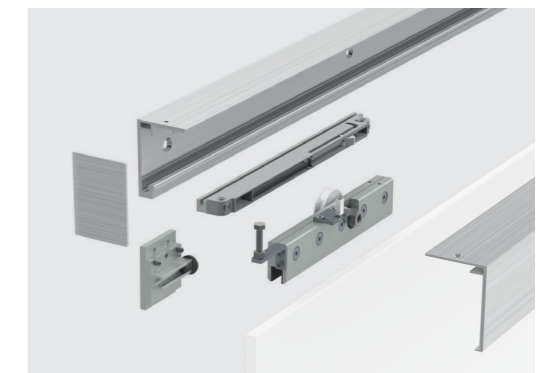


PLANNING AID FOR GLASS CALCULATION

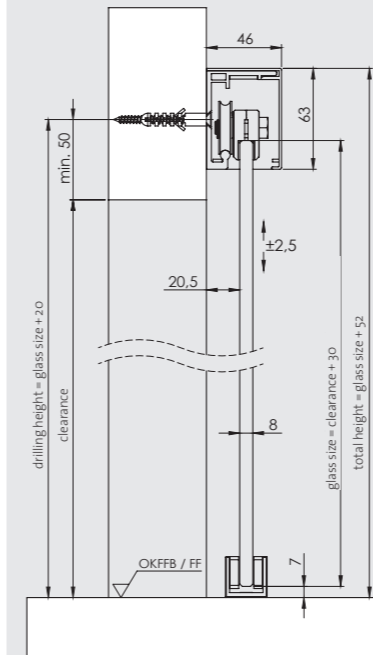
<p>WALL MOUNTING:</p> <p>glass width for 1-wing system = clear inner width + 60 mm</p> <p>glass width for 2-wing system = clear inner width + 56 mm divide by 2.</p> <p>glass height = internal passage height + 33 mm (count for 1-wing and 2-wing systems)</p> <p>Inset of the glass = 18 mm</p>	<p>MOUNTING IN FRONT OF THE FRAME:</p> <p>glass width = frame width</p> <p>glass height = frame height + 9 mm</p> <p>Inset of the glass = 18 mm</p>
--	---

### PRODUCT FEATURES PLANE0 60 PRO WALL

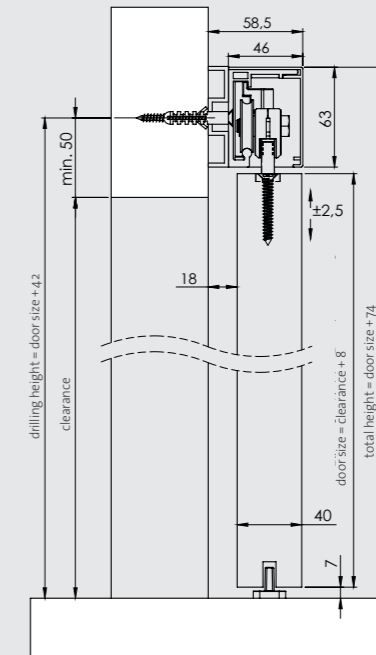
- clamping technique without glass drilling
- 1- and 2-wing
- standard lengths 2m / 2,5m / 4m
- max. 60 kg per door leaf
- with gentle-closing operation 60 kg per door leaf
- for 8 mm to 10mm by default
- surface in stainless steel optic
- height adjustment in the installed position
- glass door mounting from the front
- optional adapter-plate for glass doors 12mm and wooden doors
- mounting in front of the frame possible



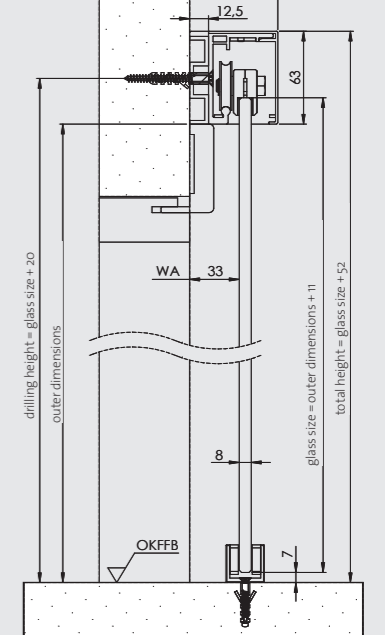
WALL INSTALLATION | GLASS DOORS



WALL INSTALLATION | WOODEN DOORS



MOUNTING IN FRONT OF THE FRAME | GLASS DOORS

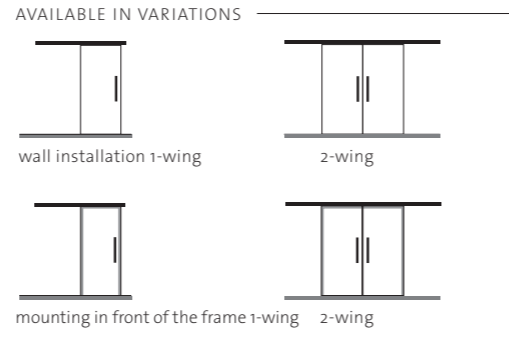


# PLANE0 120

## Wall installation



**NEW**  
UP TO 6 METERS  
LENGTH



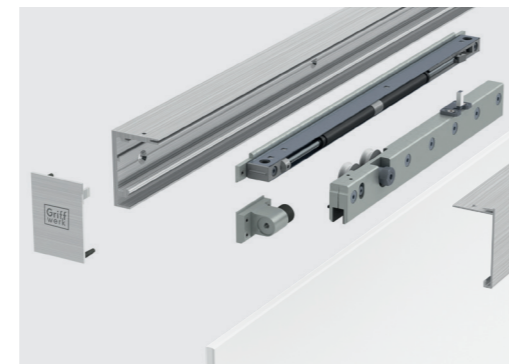
PLANNING AID FOR GLASS CALCULATION

**WALL MOUNTING:**  
 glass width for 1-wing system = clear inner width + 60 mm  
 glass width for 2-wing system = clear inner width + 56 mm divide by 2.  
 glass height = internal passage height + 33 mm (count for 1-wing and 2-wing systems)  
 Inset of the glass = 16 mm

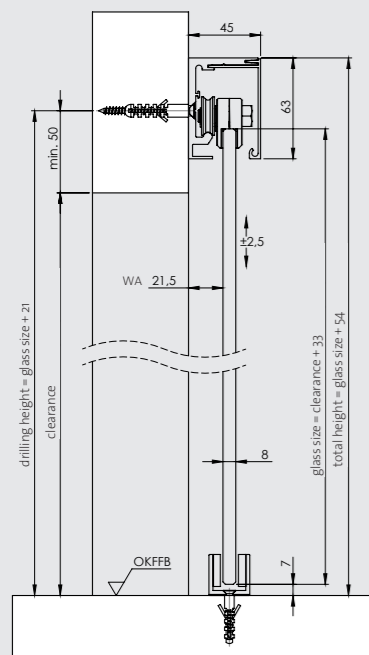
**MOUNTING IN FRONT OF THE FRAME:**  
 glass width = frame width  
 glass height = frame height + 9 mm  
 inset of the glass = 16 mm

### PRODUCT FEATURES PLANE0 120 WALL

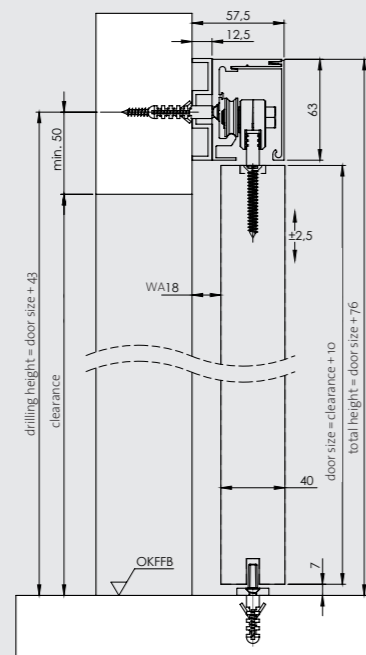
- clamping technique without glass drilling
- 1- and 2-wing
- standard lengths 2m / 2,5m / 4m
- individual lengths
- PLANE0 profile to 6m length
- max. 120 kg per door leaf
- with gentle-closing operation 80 kg per door leaf
- for 8mm to 10mm by default
- surface in ALU EV1, stainless steel look and graphite black
- height adjustment in the installed position
- glass door mounting from the front
- optional adapter-plate for glass doors 12mm and wooden doors
- mounting in front of the frame possible



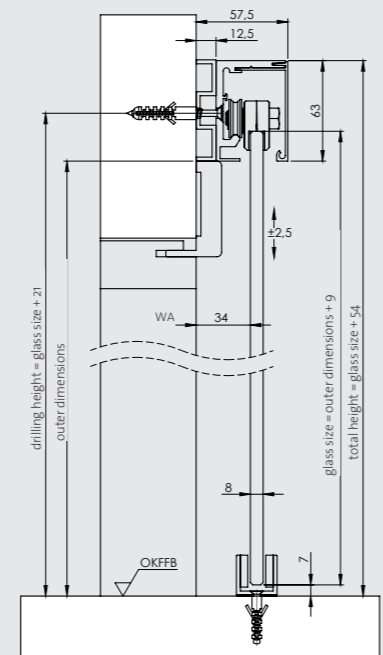
### WALL INSTALLATION | GLASS DOORS



### WALL INSTALLATION | WOODEN DOORS



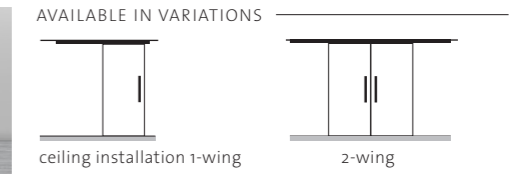
### MOUNTING IN FRONT OF THE FRAME | GLASS DOORS



# Ceiling installation



**NEW**  
UP TO 6 METERS  
LENGTH



PLANNING AID FOR GLASS CALCULATION:

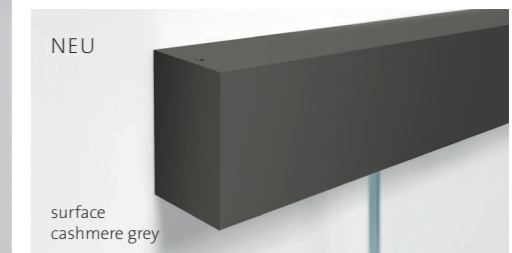
glass width for 1-wing system = clear inner width + 60 mm

glass width for 2-wing system = clear inner width + 56 mm divide by 2.

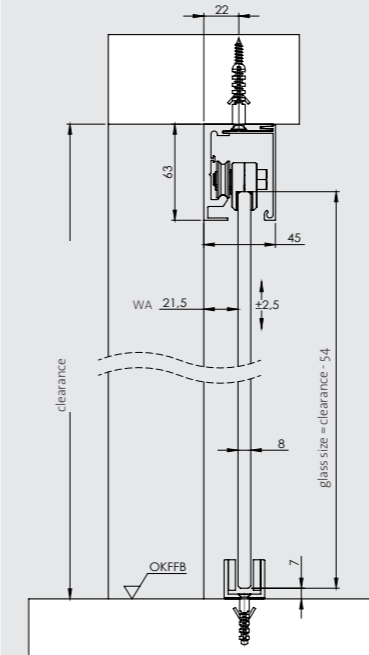
glass height = internal passage height - 54 mm (count for 1-wing and 2-wing systems)

### PRODUCT FEATURES PLANE0 60 PRO CEILING

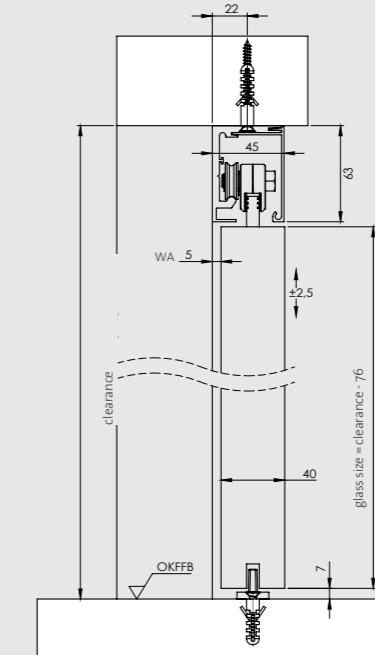
- clamping technique without glass drilling
- 1- and 2-wing
- standard lengths 2m / 2,5m / 4m
- individual lengths
- PLANE0 profile to 6m length
- max. 120 kg per door leaf
- with gentle-closing operation 80 kg per door leaf
- for 8mm to 10mm by default
- surface in ALU EV1, stainless steel look and graphite black
- height adjustment in the installed position
- glass door mounting from the front
- optional adapter-plate for glass doors 12mm and wooden doors
- mounting in front of the frame possible



### CEILING INSTALLATION | GLASS DOORS



### CEILING INSTALLATION | WOODEN DOORS



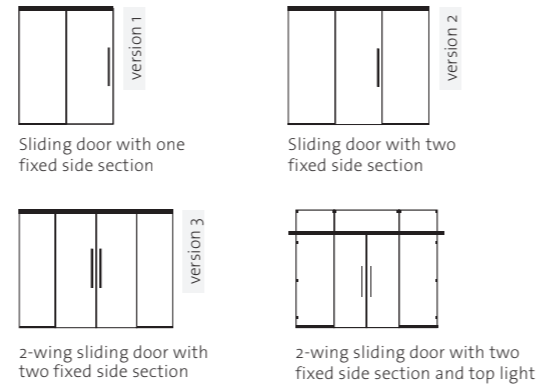
WA = WALL DISTANCE  
OKFFB = TOP EDGE OF FINISHED FLOOR

# GLASS OPTIONS

## PLANE0 120



### AVAILABLE IN VERSIONS



### PLANNING AID FOR GLASS CALCULATION:

glass height  
= clear passage height - 54

glass width for version 1  
= (clear inner width - 10) / 2 + 15

glass width for version 2  
= (clear inner width - 10) / 3 + 20

glass width for version 3  
= (clear inner width - 10 - 6) / 4 + 15

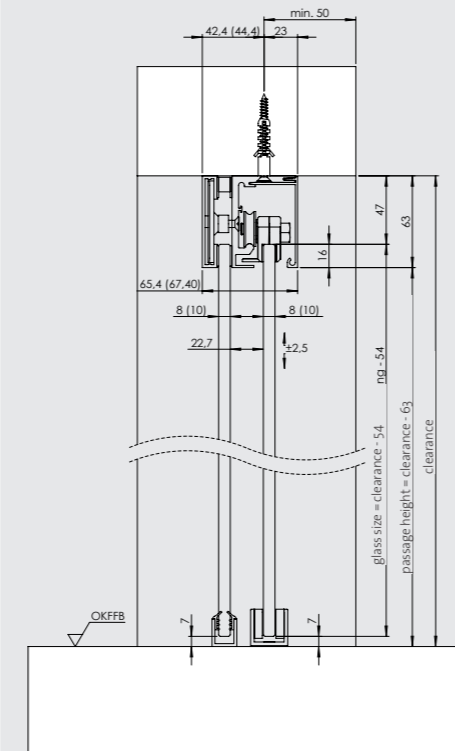
(glass widths for systems with top light = Please contact your technical adviser)  
Please note that for an optimal function of the fully glass door system the aspect ratio of the panes (width to height) 1:2,75 is not exceed.

### minimum- und maximum-width of the opening dimensions:

	min	max
width version 1	1640mm	2780mm
width version 2	2270mm	4150mm
width version 3	2956mm	5556mm

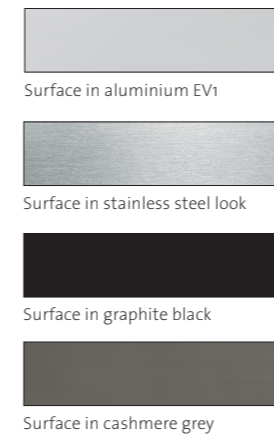
Minimum opening height of all versions = 1950mm  
Maximum opening height = see Matrix glass price catalog

### CEILING MOUNTING FOR WHOLE GLASS FACILITIES



# OVERALL VIEW

## SLIDING DOORS



Fitting of fittings without glass drilling  
Two „dual glass clamps“ hold the door securely and gently in position

- maximum combination variety in the system
- more than 60 fitting variants to choose from
- decide spontaneously and take it with you without waiting
- Dimensional errors for holes excluded
- very easy assembly by means of placement stencils
- can be changed and flexibly adapted at any time

ALL SYSTEMS ALSO AVAILABLE WITH SOFT CLOSE



	PLANE0 40	PLANE0 60 PRO	PLANE0 120	SLIDING DOOR SYSTEM R8
capacity	40 kg	60 kg	120 kg	60 kg
capacity with gentle closing operation	40 kg	60 kg	80 kg (120 kg opt. retrofittable)	60 kg
soft close optional/upgradeable	-	✓	✓	-
guarantee in years (for all surfaces)	5	8	10	10
suitable for wood doors	✓	✓	✓	-
standard glass thickness	8 mm	8 mm	8 und 10 mm	8 mm
wall mounting	✓	✓	✓	✓
ceiling mounting	-	-	✓	-
1-wing	✓	✓	✓	✓
2-wing	-	✓	✓	✓
storage	4 running rails	1 running rail	2 running rails on seesaw carriage	2 trolleys
standard lengths	1900 mm	2000 / 2200 / 4000 mm	2000 / 2200 / 4000 mm	2000 / 2500 / 4000 mm
compatible with PLANE0 AIR	-	-	✓	-
compatible with PLANE0 SMART2LOCK push handle	-	-	✓	-
surface stainless steel optic matt	✓	✓	✓	✓
surface graphite black	✓	-	✓	-
surface cashmere grey	-	-	✓	-
surface aluminium EV1	-	-	✓	-

# PLANEО SMART2LOCK

## Lockable push handle for PLANEО 120

The perfect combination of smart technology and puristic design - that is smart2lock. It enables privacy in rooms with sliding doors so that they can be undisturbed at the touch of a button.



### smart2lock by GRIFFWERK

THE LOCK takes place invisibly in the sliding system via an electric rotary motor.

**NEW**

**OUR RECOMMENDATION**

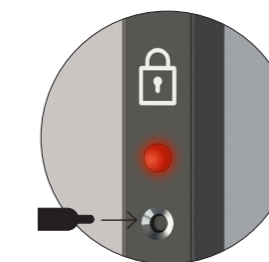
For maximum privacy we recommend the combination with PLANEО AIR silent.



SIGNAL TRANSMISSION via infrared light like a remote control.

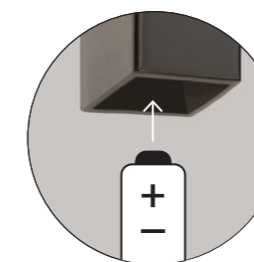


INSIDE: Simple locking and open at the touch of a button. Red LED lights up to indicate, whether the door is locked.



OUTSIDE: Red shining LED indicates whether the door is locked.

EMERGENCY UNLOCKING: Quick and easy emergency unlocking. With panic function: emergency unlocking also purely mechanically possible.

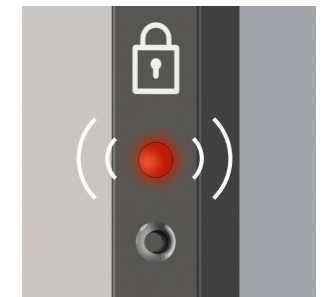


BATTERY CHANGE Easy exchange of batteries on push handle and locking in the rail.

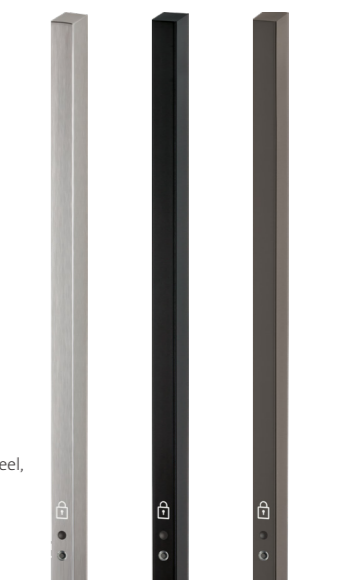
PUSH HANDLE PLANEО GS 49017 40 x 700 x 7 mm in matt stainless steel, graphite black and cashmere grey

### PRODUCT FEATURES PLANEО SMART2LOCK

- suitable for PLANEО 120
- retrofittable for PLANEО 120
- operation with two standard AA and AAA batteries each (batteries not included)
- Mounting of the push handle by gluing technology
- Battery life in normal use\* approx. 4 years



BATTERY STAND LEDs on the push handle and on top in the rail give a flashing signal when the battery is low. From then on the locking device can be operated 50 times.

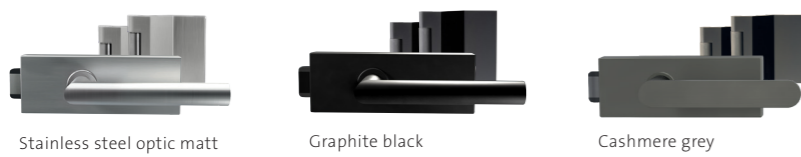


\* 20 operations á 5 min in locked state / day



# GLASS FITTINGS FOR SWING DOORS

## Lock case PURISTO S



Stainless steel optic matt

Graphite black

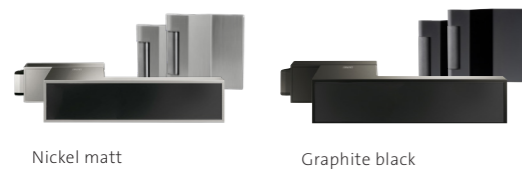
Cashmere grey

## Lock case GATE



Stainless steel optic matt, Design: sieger design

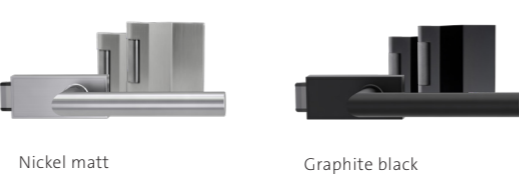
## Lock case FRAME



Nickel matt

Graphite black

## Lock case CUBE



Nickel matt

Graphite black

## Lock case PURISTO



Stainless steel optic matt

Stainless steel polished

## Lock case FABRICO & SMILE



Stainless steel optic matt

Graphite black

Stainless steel optic matt

## Lock case CREATIVO



Stainless steel optic matt

Brass look

Stainless steel polished

Perla silver matt

## Lock case CLASSICO



Stainless steel optic matt

Aluminium EV1

Brass look

## Lock case QUATTRO



Stainless steel optic matt

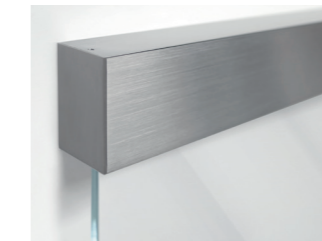


# GLASS FITTINGS FOR SLIDING DOORS

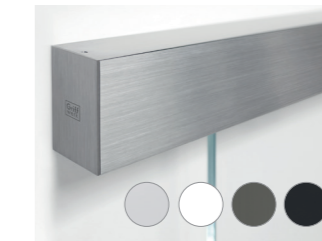
## PLANE0 40



## PLANE0 60 PRO



## PLANE0 120



## PLANE0 AIR



## PLANE0 LOFT



DESIGN VARIANT: 4 LINES

DESIGN VARIANT: SPROUTS

DESIGN VARIANT: INDIVIDUAL (example illustration)

## R8-DESIGN Stainless steel optic matt



## GRIP SHELLS



CIRCLE Stainless steel optic matt Ø 60 mm H: 10 mm

CIRCLE Graphite black Ø 60 mm H: 10 mm

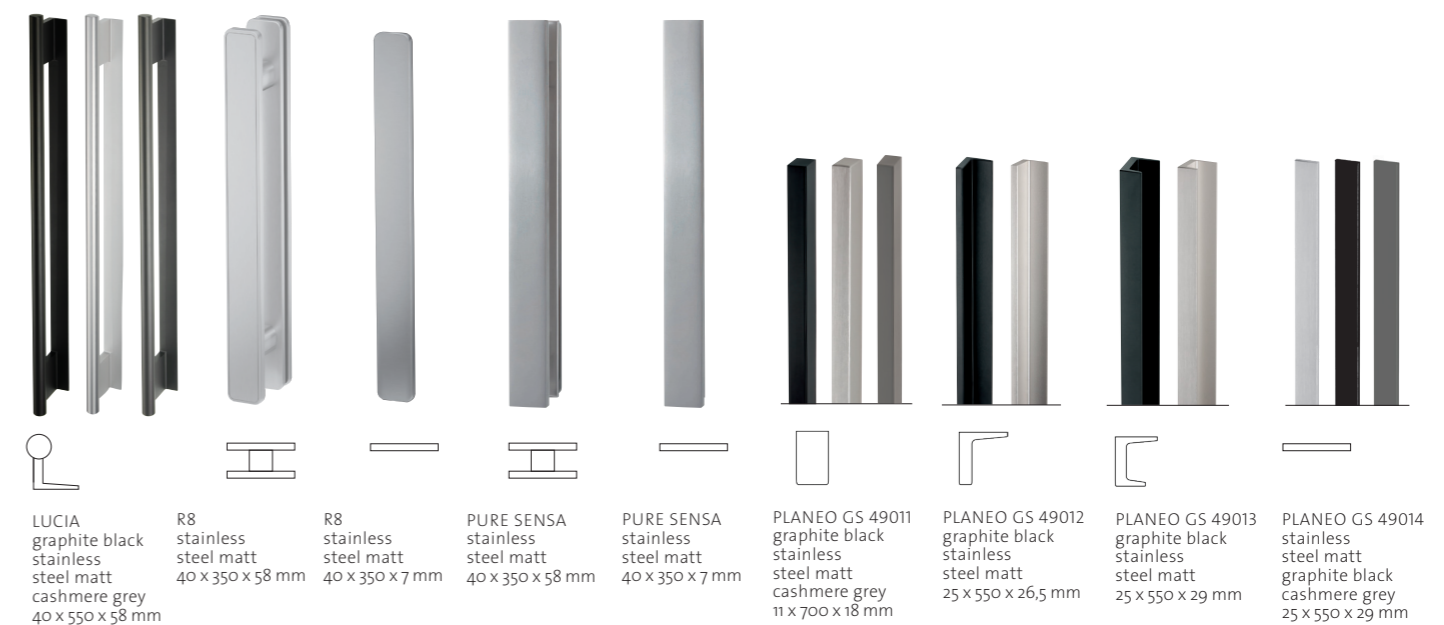
CIRCLE Cashmere grey Ø 60 mm H: 10 mm

R8-QUATTRO Stainless steel optic matt 58 x 58 x 9 mm

R8-SQUARE Stainless steel optic matt 58 x 115 x 9 mm

PLANE0 GM\_49111 Graphite black with copper or brass core Ø 60 mm H: 11 mm

## PUSH HANDLES



LUCIA graphite black stainless steel matt 40 x 550 x 58 mm

R8 stainless steel matt 40 x 350 x 58 mm

R8 stainless steel matt 40 x 350 x 7 mm

PURE SENSА stainless steel matt 40 x 350 x 58 mm

PURE SENSА stainless steel matt 40 x 350 x 7 mm

PLANE0 GS 49011 graphite black stainless steel matt 11 x 700 x 18 mm

PLANE0 GS 49012 graphite black stainless steel matt 25 x 550 x 26,5 mm

PLANE0 GS 49013 graphite black stainless steel matt 25 x 550 x 29 mm

PLANE0 GS 49014 stainless steel matt graphite black cashmere grey 25 x 550 x 29 mm

FOR MORE  
INFORMATION VISIT  
[WWW.GRIFFWERK.DE](http://WWW.GRIFFWERK.DE)



reddot award 2017  
winner



GERMAN  
DESIGN  
AWARD  
NOMINEE  
2019